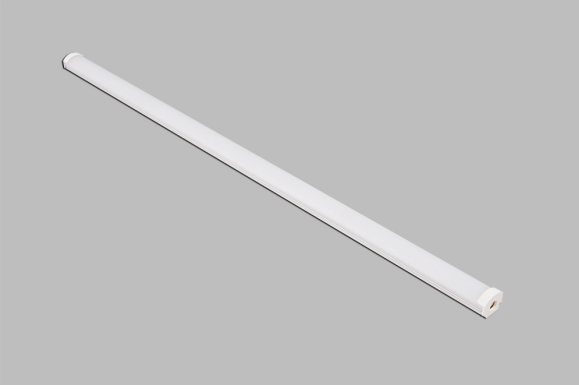


PRODUCT DATA SHEET



LINEER LED RD-1000 SERIES



LUMINARE DETAILS

HOUSING
PMMA cover
Aluminium eloxal body

VOLTAGE
24 VDC

COLOR TEMPERATURE

2700 K
3000 K
4000 K
5000 K
RGB

COVER TYPE

Clear CO
Opal MO

MOUNTING

Surface mounted

APPLICATIONS

Indoor
Outdoor

CONTROL SYSTEM

1-10V
DMX
DALI
ON/OFF

OPTIONAL ACCESSORIES

Power supply
Emergency Kit



3000K



4000K



5000K



RGB

IP40

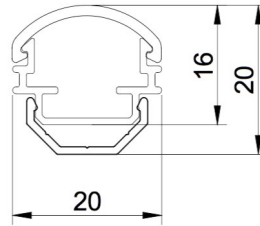
IP55



RoHS



CE



RD 1000 SERIES					
ORDER CODE	LED/MT	LED	LUMEN/MT	POWER CONSUMPTION	IP RATE
RD-1100.24	24 LED/MT	5630	800 LM/MT	10 W/MT	IP 40, IP 55
RD-1100.36	36 LED/MT	5630	1200 LM/MT	14 W/MT	IP 40, IP 55
RD-1100.48	48 LED/MT	5630	1600 LM/MT	18 W/MT	IP 40, IP 55
RD-1100.60	60 LED/MT	5630	2000 LM/MT	24 W/MT	IP 40, IP 55
RD-1200.60	60 LED/MT	3014	440 LM/MT	6 W/MT	IP 40, IP 55
RD-1200.72	72 LED/MT	3014	520 LM/MT	8 W/MT	IP 40, IP 55
RD-1200.120	120 LED/MT	3014	840 LM/MT	12 W/MT	IP 40, IP 55
RD-1200.160	160 LED/MT	3014	1200 LM/MT	16 W/MT	IP 40, IP 55
RD-1700.36	36 LED/MT	5050	RGB	12 W/MT	IP 40, IP 55
RD-1700.60	60 LED/MT	5050	RGB	18 W/MT	IP 40, IP 55