

## ÜRÜN AÇIKLAMALARI

redİ

### LİNEER LED RD-M-1000 SERİSİ



#### ÜRÜN DETAYI

GÖVDE  
PMMA kapak  
Aluminyum eloksal gövde

GERİLİM  
24 VDC

ÇALIŞMA SICAKLIĞI

#### RENK SICAKLIĞI

2700 K  
3000 K  
4000 K  
5000 K  
RGB  
RGBW

#### KAPAK TİPİ

Şeffaf CO  
Mat MO

#### MONTAJ

Yüze montaj

#### KONTROL SİSTEMİ

1-10V  
DMX  
ON/OFF

#### UYGULAMA ALANLARI

İçmekan  
Dışmekan

#### EK AKSESUARLAR

Güç kaynağı



3000K



4000K



5000K



RGB

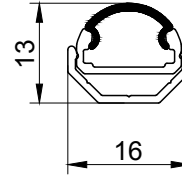
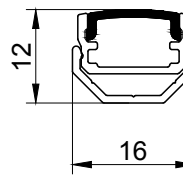
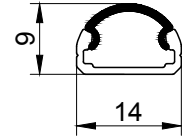
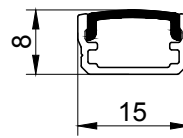
IP40



RoHS



CE



RD M 1000 SERİSİ ÜRÜNLER					
ÜRÜN KODU	LED/MT	LED	LUMEN/MT	GÜÇ TÜKETİMİ	KORUMA SINIFI
RD-M-1000.01	48 LED/MT	3014	350 LM/MT	5 W/MT	IP 40
RD-M-1000.02	60 LED/MT	3014	440 LM/MT	6 W/MT	IP 40
RD-M-1000.03	72 LED/MT	3014	520 LM/MT	8 W/MT	IP 40
RD-M-1000.04	120 LED/MT	3014	840 LM/MT	12 W/MT	IP 40
RD-M-1000.05	60 LED/MT	3528	360 LM/MT	5 W/MT	IP 40
RD-M-1000.06	120 LED/MT	3528	720 LM/MT	10 W/MT	IP 40
RD-M-1000.07	60 LED/MT	3022	1140 LM/MT	15 W/MT	IP 40
RD-M-1700.01	60 LED/MT	5050	RGB	15 W/MT	IP 40
RD-M-1700.02	60+60 LED/MT	5050+3528	RGBW	15+5 W/MT	IP 40