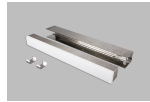
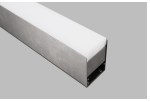


## PRODUCT DATA SHEET



### MARKER LIGHT RF-1000 SERIES



#### **LUMINAIRE DETAILS**

##### HOUSING

Acrylic front cover  
Stainless steel body

##### VOLTAGE

24 VDC

#### **COLOR TEMPERATURE**

2700 K  
3000 K  
4000 K  
5000 K  
RED  
GREEN  
BLUE  
AMBER  
RGB

#### **MOUNTING**

Inground

#### **CONTROL SYSTEM**

1-10V  
DMX  
DALI  
ON/OFF

#### **APPLICATIONS**

Outdoors

#### **OPTIONAL ACCESSORIES**

Power supply



3000K



4000K



5000K



RoHS



CE

RF 1000 SERIES					
ORDER CODE	LED/MT	LUMEN/MT	POWER CONSUMPTION	COLOR TEMPERATURE	IP RATE
RF-1000.01	288 LED/MT	900 LM/MT	22 W/MT	2700	IP 67
		900 LM/MT		3000	IP 67
		900 LM/MT		4000	IP 67
		900 LM/MT		5000	IP 67
RF-1000.02	144 LED/MT	360 LM/MT	15 W/MT	RED	IP 67
		360 LM/MT		GREEN	IP 67
		360 LM/MT		BLUE	IP 67
		320 LM/MT		AMBER	IP 67
RF-1000.03	144 LED/MT	RGB	22 W/MT	RGB	IP 67