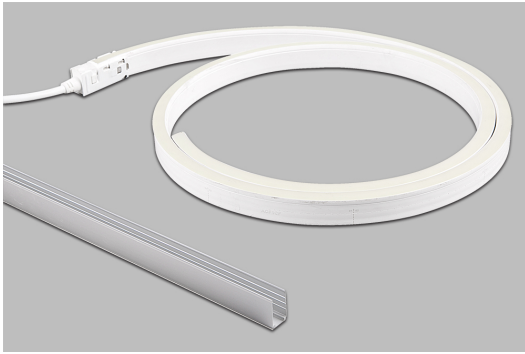


## PRODUCT DATA SHEET

### FLEXIBLE LED LIGHTING RL-1000 SERIES



#### **LUMINARE DETAILS**

SMD LED light source,  
max bending diameter  
of 30 cm, Fire  
retardant, anti UV, 160°  
beam angle, IP68  
protection, Top View  
24 VDC

#### **COLOR TEMPERATURE**

2700 K  
3000 K  
4000 K  
5000 K  
RED  
AMBER

#### **MOUNTING**

Surface Mounted

#### **APPLICATIONS**

Outdoors

#### **CONTROL SYSTEM**

1-10V  
DMX  
DALI  
ON/OFF

#### **OPTIONAL ACCESSORIES**

Power supply



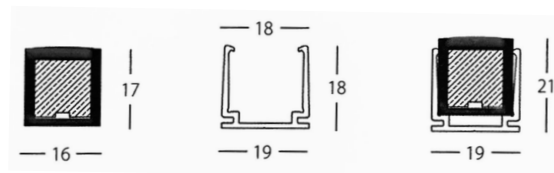
3000K



4000K



5000K



RL 1000 SERIES					
ORDER CODE	LED/MT	COLOR TEMPERATURE	LUMEN/MT	POWER CONSUMPTION	IP RATE
RL-1000.01	108 LED/MT	WHITE	450 LM/MT	10,5 W/MT	IP 68
RL-1000.02	108 LED/MT	RED	180 LM/MT	7,2 W/MT	IP 68
RL-1000.03	108 LED/MT	AMBER	160 LM/MT	7,2 W/MT	IP 68