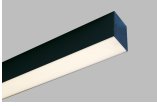
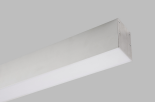


# PRODUCT DATA SHEET



## LİNEER LED RP-1000 SERIES



### LUMINARE DETAILS

HOUSING  
PMMA cover  
Aluminium eloxal body

VOLTAGE  
230 VAC

### COLOR TEMPERATURE

2700 K  
3000 K  
4000 K  
5000 K

### COVER TYPE

Opal MO

### MOUNTING

Surface montage

### CONTROL SYSTEM

1-10V  
DALI  
ON/OFF

### APPLICATIONS

Indoors

### OPTIONAL ACCESSORIES

Emergency Kit



3000K



4000K



5000K



IP40



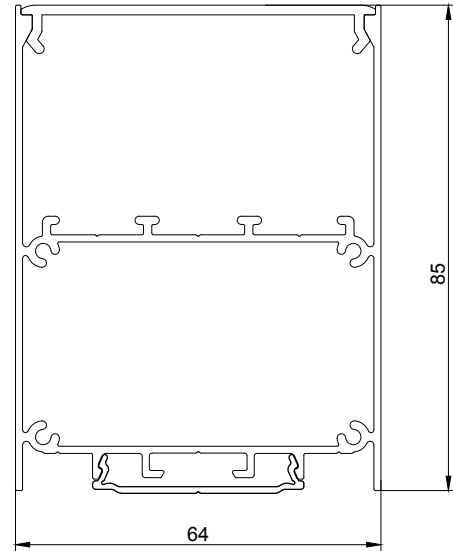
III

RoHS



F

CE



RP-1000 SERIES						
ORDER CODE	LED/MT	LED	LUMEN/MT	POWER CONSUMPTION	COLOR TEMPERATURE	IP RATE
RP-1000	72 LED/MT	5630	2500 LM/MT	30 W/MT	2700 3000 4000 5000	IP 40