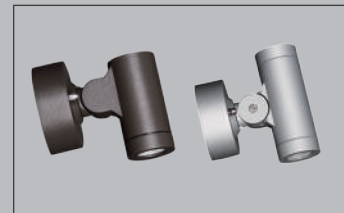


WALL MOUNTING LANDSCAPE LIGHT

product overview



274



276



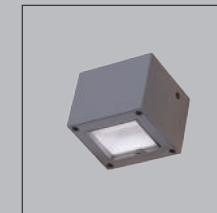
278



280



282



284



286



287



288



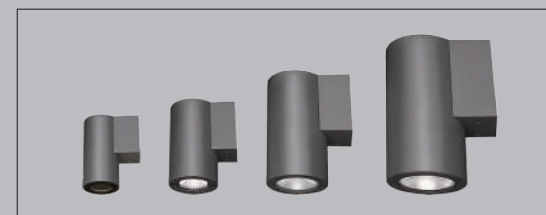
289



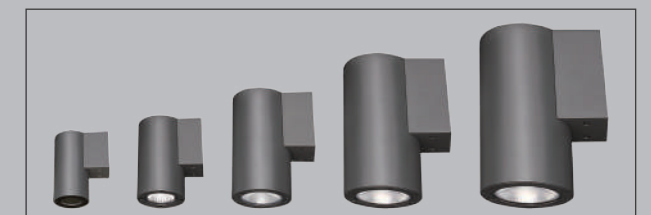
290



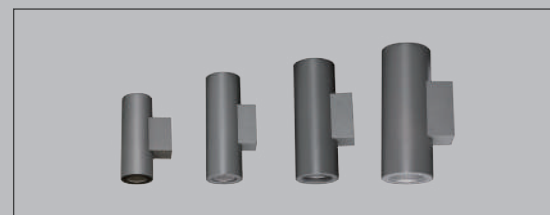
292



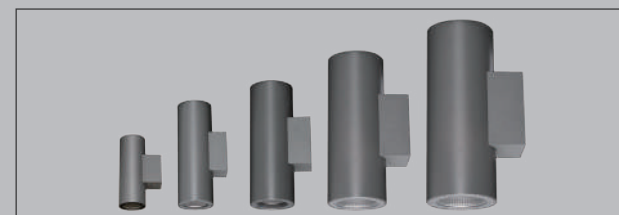
294



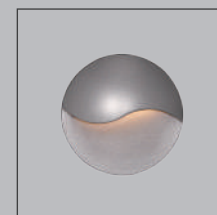
296



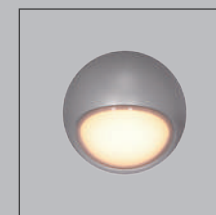
300



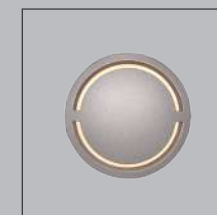
302



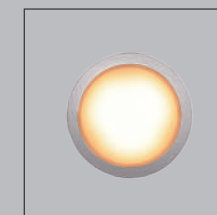
306



308



310



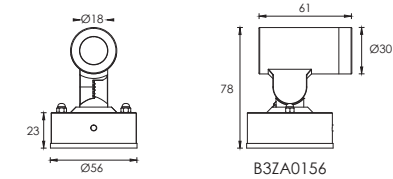
312

Small Type Wall Mounting Landscape Light

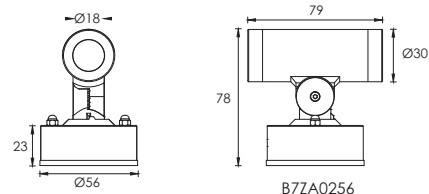


OUTER DIMENSIONS & ACCESSORIES

Unit:mm



B3ZA0156



B7ZA0256

LED COLOUR TEMPERATURE

2000K · 3000K · 6000K

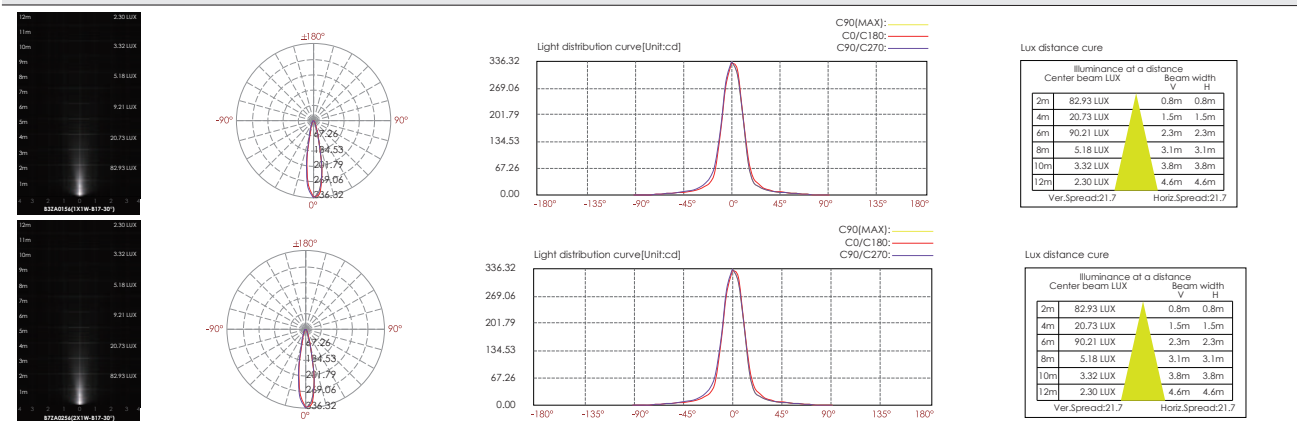
MATERIAL SPECIFICATIONS

HOUSING	12# Die-casting dark grey powder coated aluminum T=60-80µm,Adhesion of ISO class 1/ASTM class 4B
LENS	PC
PC COVER	UV-Resistance PC,T=3.5mm
LED DRIVER	Constant Voltage Input,Constant Current Output
PCB	heat conductivity≥2.0w/mk
LED	OSRAM
OPERATING TEMPERATURE	-20°C~40°C
POWER CABLE	1AWM 1A 105°C 600V 18AWG FTI L=300mm
MOUNTING BASE	Powder coated die-casting aluminum
DIMMABLE SUPPORT	Triac PWM 1-10V Dali

TECHNICAL DATA

ITEM	LIGHT SOURCE	LENS	LENS DEGREE(°)Ø1/2	INPUT VOLTAGE(V)	OPERATING CURRENT(MA)	CONSUMPTION(W)	LUMINANCE(LM)	IK
B3ZA0156	1×1W	B17	30°	24V DC	48	1.2	Cool White = 100 Warm White = 83	02
B7ZA0256	2×1W	B17	30°	24V DC	91	2.2	Cool White = 100x2 Warm White = 83x2	02

PHOTOMETRIC CURVES



WALL MOUNTING
LANDSCAPE LIGHT



OPTICS



HOUSING COLOR OPTION

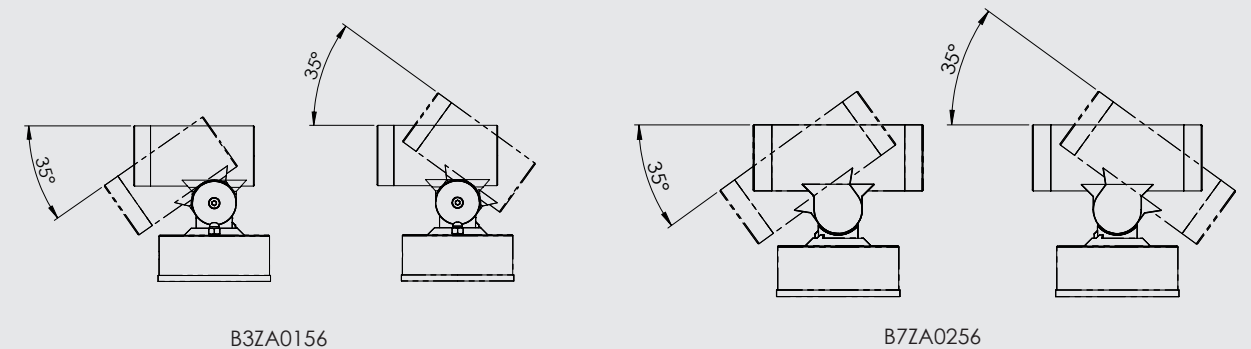


Sanded Brown
RAL 8019

Sanded Black
RAL 9005

Sanded White
RAL 9003

ADJUSTABLE BEAM DIRECTION



B3ZA0156

B7ZA0256

Wall Mounting Landscape Light

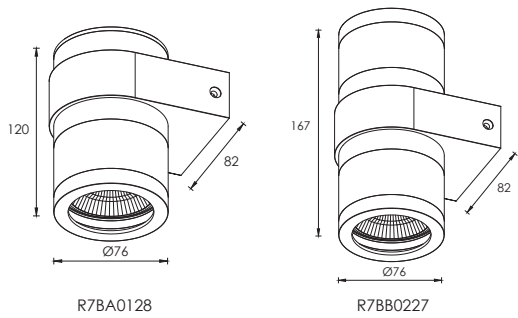


LED COLOUR TEMPERATURE

3000K · 6000K

OUTER DIMENSIONS & ACCESSORIES

Unit:mm



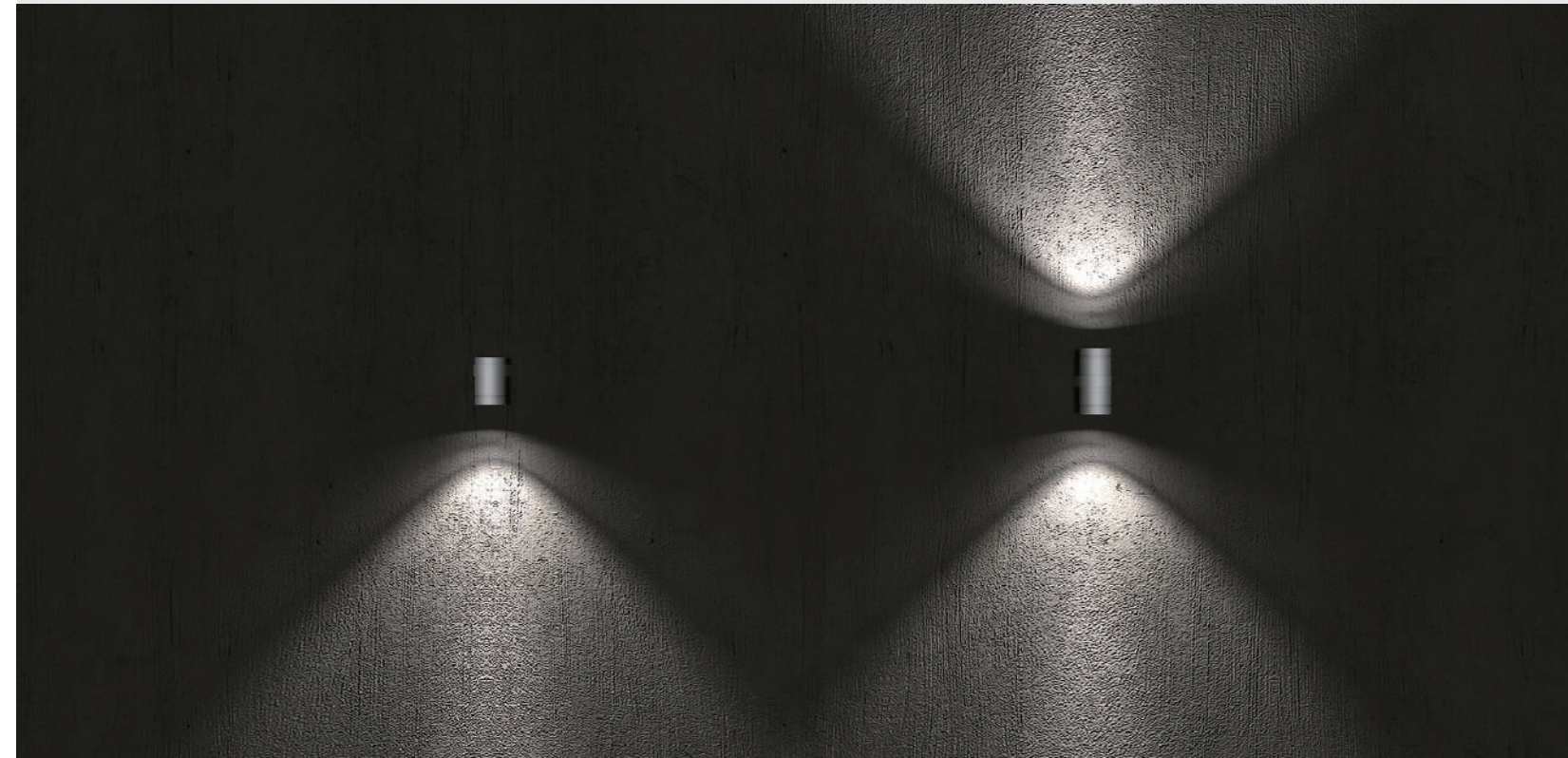
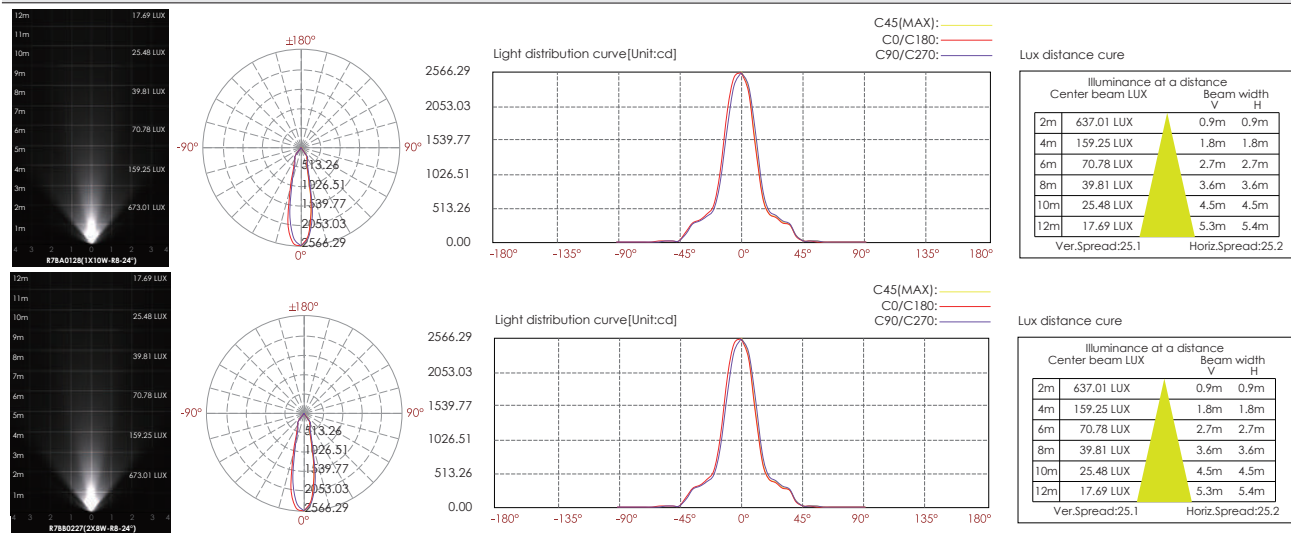
MATERIAL SPECIFICATIONS

HOUSING	12# Die-casting dark grey powder coated aluminum T=60-80μm,Adhesion of ISO class 1/ASTM class 4B
REFLECTOR	1
LIGHT WINDOW	1 PMMA T=6mm
LED DRIVER	1 Constant Voltage Input,Constant Current Output
LED	1 NICHIA
POWER CABLE	H05RN-F 2X1.0mm ² L=0.3m(low voltage) H05RN-F 3X1.0mm ² L=0.3m(High voltage)
OPERATING TEMPERATURE	-20°C~40°C

TECHNICAL DATA

ITEM	LIGHT SOURCE	REFLECTOR	LENS DEGREE(°)Ø1/2	INPUT VOLTAGE(V)	OPERATING CURRENT(MA)	CONSUMPTION(W)	LUMINANCE(LM)
R7BA0128	1×10W COB	R8	24°	24V DC 120/240	24V = 480 120V = 107 240V = 60	24V = 11.5 120V = 12.6 240V = 12.6	Cool White = 1018 Warm White = 956
R7BB0227	2×8W COB	R8	24°	24V DC 120/240	24V = 822 120V = 182 240V = 103	24V = 19.7 120V = 21 240V = 21	Cool White = 1018x2 Warm White = 956x2

PHOTOMETRIC CURVES



OPTICS



HOUSING COLOR OPTION



Wall Mounting Landscape Light



LED COLOUR TEMPERATURE

3000K · 6000K

OPTICS



R3

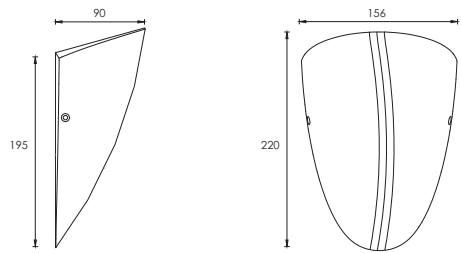


25°

R0115C061HM

OUTER DIMENSIONS & ACCESSORIES

Unit:mm



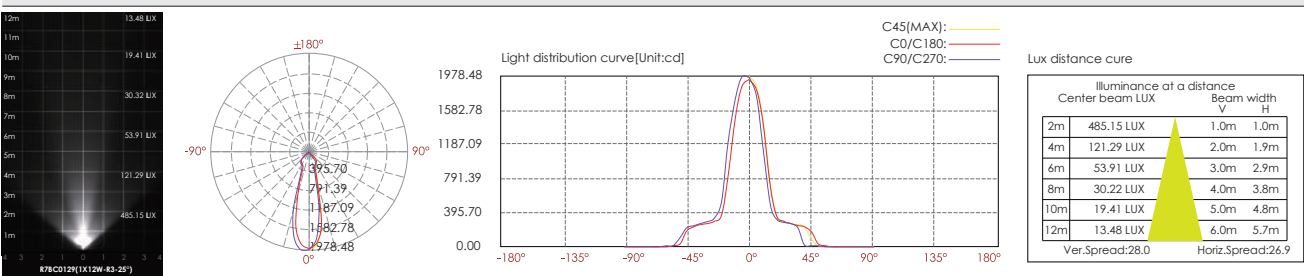
MATERIAL SPECIFICATIONS

- HOUSING** | 12# Die-casting dark grey powder coated aluminum
T=60-80µm,Adhesion of ISO class 1/ASTM class 4B
- FRONT COVER** | 12# Die-casting aluminum
- LIGHT WINDOW** | Tempered glass,T=3.5mm
- LED** | NICHIA
- LED DRIVER** | Constant Voltage Input,Constant Current Output
- OPERATING TEMPERATURE** | -20°C~40°C
- POWER CABLE** | H05RN-F 2X1.0mm2 L=0.3m(low voltage)
H05RN-F 3X1.0mm2 L=0.3m(High voltage)

TECHNICAL DATA

ITEM	LIGHT SOURCE	LENS	LENS DEGREE(°)Ø1/2	INPUT VOLTAGE(V)	OPERATING CURRENT(MA)	CONSUMPTION(W)	LUMINANCE(LM)	IK
R7BC0129	1×12W COB	R3	25°	24V DC 120/240	24V = 576 120V = 112 240V = 64	24V = 13.8 120V = 14 240V = 14.1	Cool White = 834 Warm White = 809	05

PHOTOMETRIC CURVES



WALL MOUNTING
LANDSCAPE LIGHT



HOUSING COLOR OPTION



Sanded Brown
RAL 8019

Sanded Black
RAL 9005

Sanded White
RAL 9003

Wall Mounting Landscape Light



LED COLOUR TEMPERATURE

3000K · 6000K

OPTICS



R3

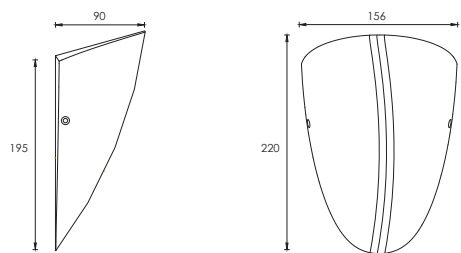


25°

R0115C061HM

OUTER DIMENSIONS & ACCESSORIES

Unit:mm



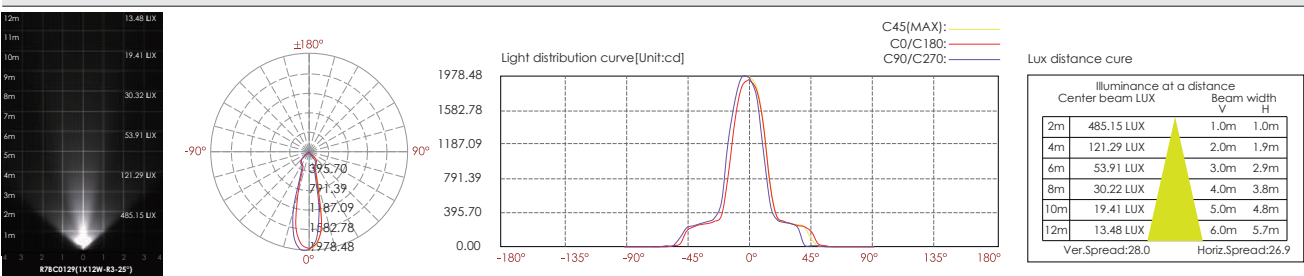
MATERIAL SPECIFICATIONS

- HOUSING** | 12# Die-casting dark grey powder coated aluminum
T=60-80µm,Adhesion of ISO class 1/ASTM class 4B
- FRONT COVER** | 12# Die-casting aluminum
- LIGHT WINDOW** | Tempered glass,T=3.5mm
- LED** | NICHIA
- LED DRIVER** | Constant Voltage Input,Constant Current Output
- OPERATING TEMPERATURE** | -20°C~40°C
- POWER CABLE** | H05RN-F 2X1.0mm2 L=0.3m(low voltage)
H05RN-F 3X1.0mm2 L=0.3m(High voltage)

TECHNICAL DATA

ITEM	LIGHT SOURCE	LENS	LENS DEGREE(°)Ø1/2	INPUT VOLTAGE(V)	OPERATING CURRENT(MA)	CONSUMPTION(W)	LUMINANCE(LM)	IK
R7BC0129	1×12W COB	R3	25°	24V DC 120/240	24V = 576 120V = 112 240V = 64	24V = 13.8 120V = 14 240V = 14.1	Cool White = 834 Warm White = 809	05

PHOTOMETRIC CURVES



WALL MOUNTING
LANDSCAPE LIGHT



HOUSING COLOR OPTION



Sanded Brown
RAL 8019

Sanded Black
RAL 9005

Sanded White
RAL 9003

Beam Effect Wall Mounting Landscape Light



LED COLOUR TEMPERATURE

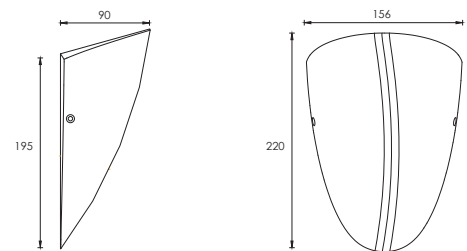
3000K · 6000K

OPTICS



OUTER DIMENSIONS & ACCESSORIES

Unit:mm



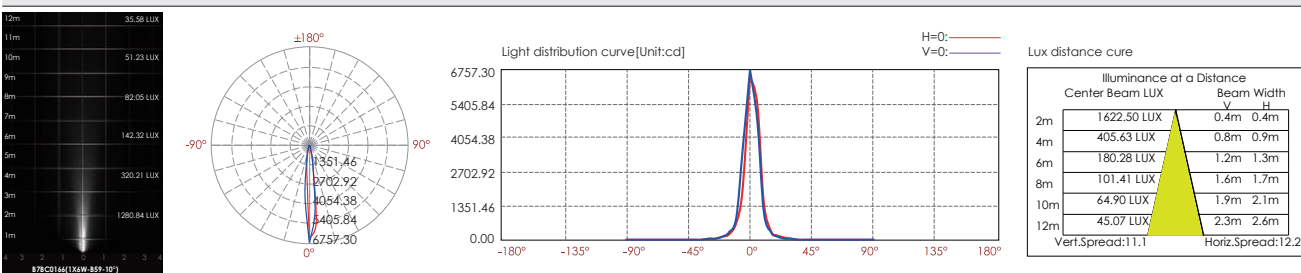
MATERIAL SPECIFICATIONS

HOUSING	12# Die-casting dark grey powder coated aluminum T=60-80µm.Adhesion of ISO class 1/ASTM class 4B
FRONT COVER	12# Die-casting aluminum
LIGHT WINDOW	1 Tempered glass.T=3.5mm
LED	1 NICHIA
LED DRIVER	1 Constant Voltage Input,Constant Current Output
OPERATING TEMPERATURE	1 -20°C~40°C
POWER CABLE	H05RN-F 2X1.0mm ² L=0.3m(low voltage) H05RN-F 3X1.0mm ² L=0.3m(High voltage)

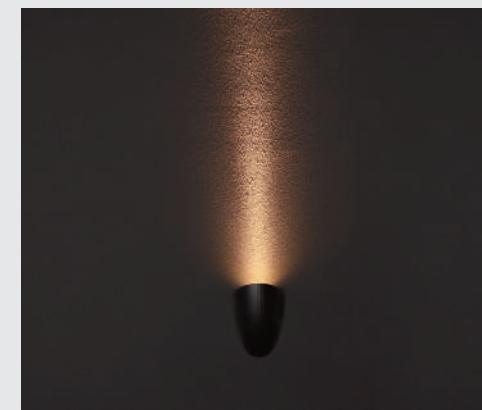
TECHNICAL DATA

ITEM	LIGHT SOURCE	LENS	LENS DEGREE(°)Ø1/2	INPUT VOLTAGE(V)	OPERATING CURRENT(MA)	CONSUMPTION(W)	LUMINANCE(LM)	IK
B7BC0166	1×6W	B59	10°	120/240	120V = 108 240V = 61	120V = 7.8 240V = 8.3	Cool White = 500 Warm White = 444	05

PHOTOMETRIC CURVES



Above diagram effect shows a real simulation based on IES result and optical testing basis



HOUSING COLOR OPTION



Sanded Brown
RAL 8019

Sanded Black
RAL 9005

Sanded White
RAL 9003

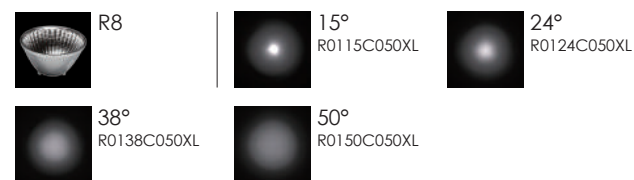
Wall Mounting Landscape Light



LED COLOUR TEMPERATURE

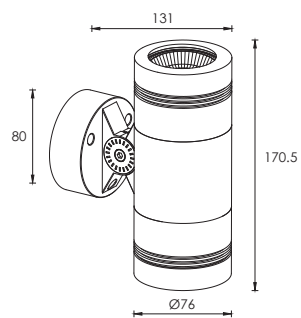
3000K · 6000K

OPTICS



OUTER DIMENSIONS & ACCESSORIES

Unit:mm



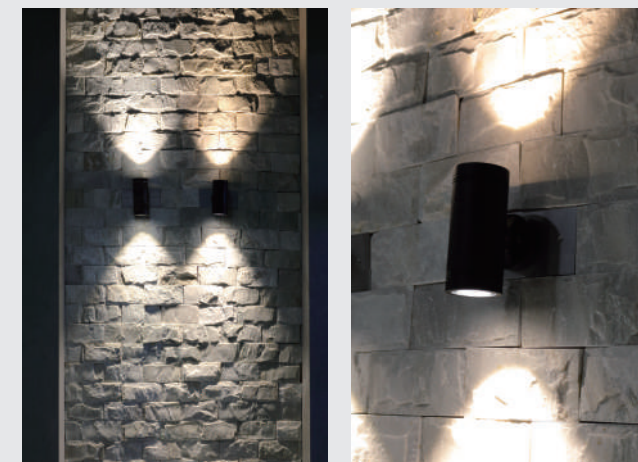
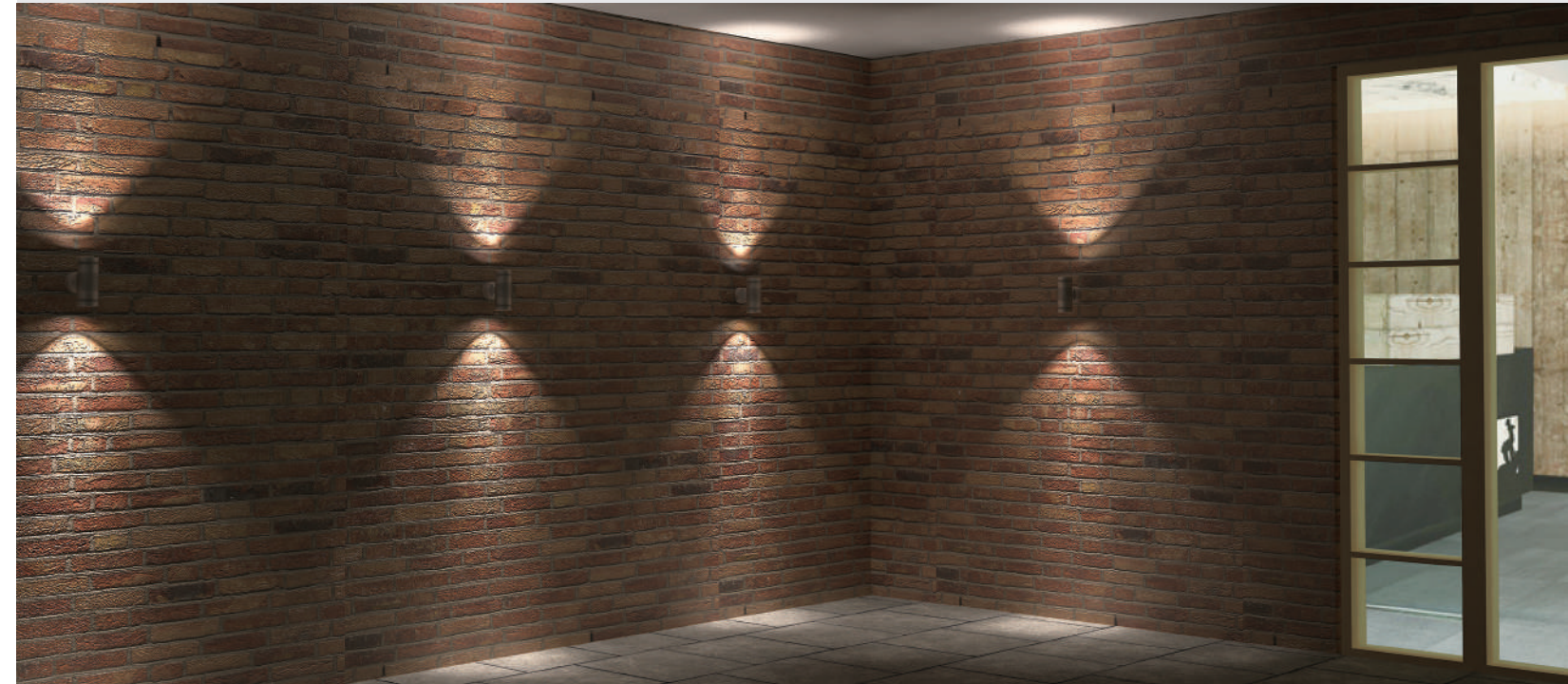
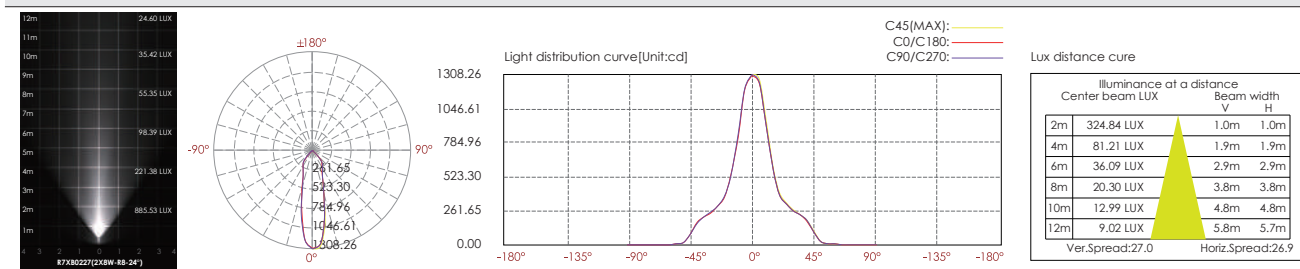
MATERIAL SPECIFICATIONS

- HOUSING** | 12# Die-casting dark grey powder coated aluminum
T=60-80µm.Adhesion of ISO class 1/ASTM class 4B
- OPTICAL REFLECTOR** | Optocal reflector efficiency≥85%
- LIGHT WINDOW** | Tempered glass.T=4mm
- LED** | NICHIA
- OPERATING TEMPERATURE** | -20°C~40°C
- POWER CABLE** | H05RN-F 2X1.0mm² L=0.3m(low voltage)
H05RN-F 3X1.0mm² L=0.3m(High voltage)
- MOUNTING BASE** | casting aluminum

TECHNICAL DATA

ITEM	LIGHT SOURCE	LENS	LENS DEGREE(°)Ø1/2	INPUT VOLTAGE(V)	OPERATING CURRENT(MA)	CONSUMPTION(W)	LUMINANCE(LM)
R7XB0227	2×8W COB	R8	24°	24V DC 120/240	24V = 822 120V = 182 240V = 103	24V = 19.7 120V = 21 240V = 21	Cool White = 932×2 Warm White = 845×2

PHOTOMETRIC CURVES

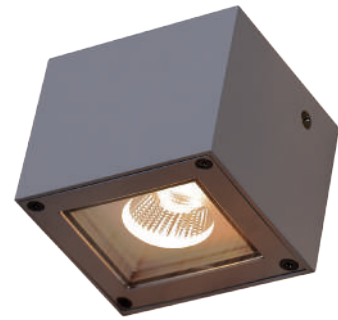


HOUSING COLOR OPTION



Sanded Brown RAL 8019 Sanded Black RAL 9005 Sanded White RAL 9003

Wall Mounting Landscape Light



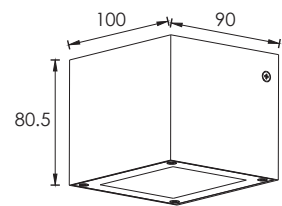
Single Side

LED COLOUR TEMPERATURE

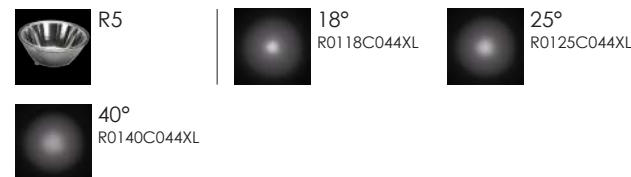
3000K · 6000K

OUTER DIMENSIONS & ACCESSORIES

Unit:mm



OPTICS



MATERIAL SPECIFICATIONS

- HOUSING** | 12# Die-casting dark grey powder coated aluminum
T=60-80µm, Adhesion of ISO class 1/ASTM class 4B
- LIGHT WINDOW** | PC T=6mm
- GASKET** | Tooling shaped seal
- DRIVER** | Main voltage 100V-240V driver inside builded
- OPERATING TEMPERATURE** | -20°C~40°C
- POWER CABLE** | H05RN-F 2×1.0mm² L=0.3m (low voltage)
H05RN-F 3×1.0mm² L=0.3m (high voltage)

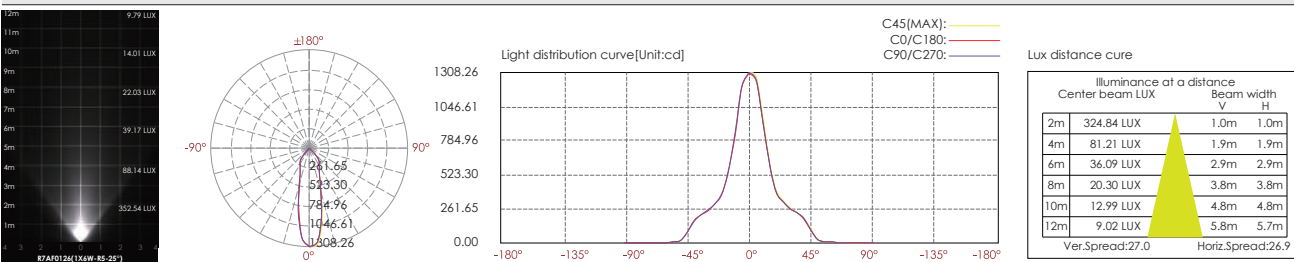
HOUSING COLOR OPTION



TECHNICAL DATA

ITEM	LIGHT SOURCE	LENS	LENS DEGREE(°)Ø1/2	INPUT VOLTAGE(V)	OPERATING CURRENT(MA)	CONSUMPTION(W)	LUMINANCE(LM)	IK
R7AF0126	1×6W COB	R5	25°	24V DC 120/240	24V = 270 120V = 65 240V = 37	24V = 6.5 120V = 7.7 240V = 7.8	Cool White = 745 Warm White = 651	06

PHOTOMETRIC CURVES



WALL MOUNTING LANDSCAPE LIGHT

Wall Mounting Landscape Light



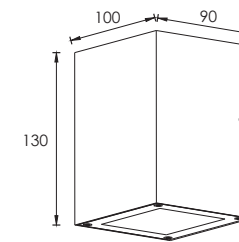
Double side

LED COLOUR TEMPERATURE

2000K · 3000K · 6000K

OUTER DIMENSIONS & ACCESSORIES

Unit:mm



OPTICS

N/A

MATERIAL SPECIFICATIONS

- HOUSING** | 12# Die-casting dark grey powder coated aluminum
T=60-80µm, Adhesion of ISO class 1/ASTM class 4B
- LIGHT WINDOW** | PC T=6mm
- GASKET** | Tooling shaped seal
- DRIVER** | Main voltage 100V-240V driver inside builded
- OPERATING TEMPERATURE** | -20°C~40°C
- POWER CABLE** | H05RN-F 2×1.0mm² L=0.3m (low voltage)
H05RN-F 3×1.0mm² L=0.3m (high voltage)

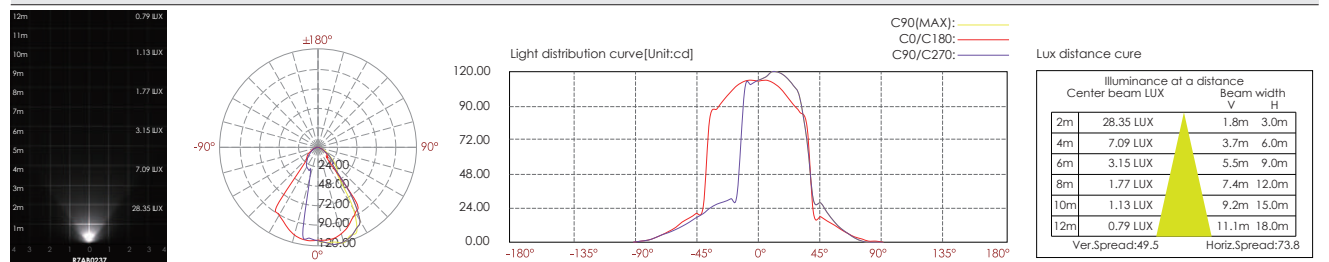
HOUSING COLOR OPTION



TECHNICAL DATA

ITEM	LIGHT SOURCE	INPUT VOLTAGE(V)	OPERATING CURRENT(MA)	CONSUMPTION(W)	LUMINANCE(LM)	IK
D7AB0237	2×3W NICHIA	24V DC 120/240	24V = 268 120V = 73 240V = 42	24V = 6.2 120V = 8.5 240V = 8.6	2×155	06

PHOTOMETRIC CURVES



Wall Mounting Landscape Light



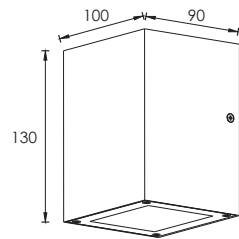
Double Side

LED COLOUR TEMPERATURE

2000K · 3000K · 6000K

OUTER DIMENSIONS & ACCESSORIES

Unit:mm



OPTICS

N/A

MATERIAL SPECIFICATIONS

- HOUSING** | 12# Die-casting dark grey powder coated aluminum
T=60-80μm.Adhesion of ISO class 1/ASTM class 4B
- LIGHT WINDOW** | PC T=6mm
- GASKET** | Tooling shaped seal
- DRIVER** | Main voltage 100V-240V driver inside builded
- OPERATING TEMPERATURE** | -20°C~40°C
- POWER CABLE** | H05RN-F 2×1.0mm² L=0.3m(low voltage)
H05RN-F 3×1.0mm² L=0.3m(high voltage)

HOUSING COLOR OPTION



Dark Grey
RAL 7037

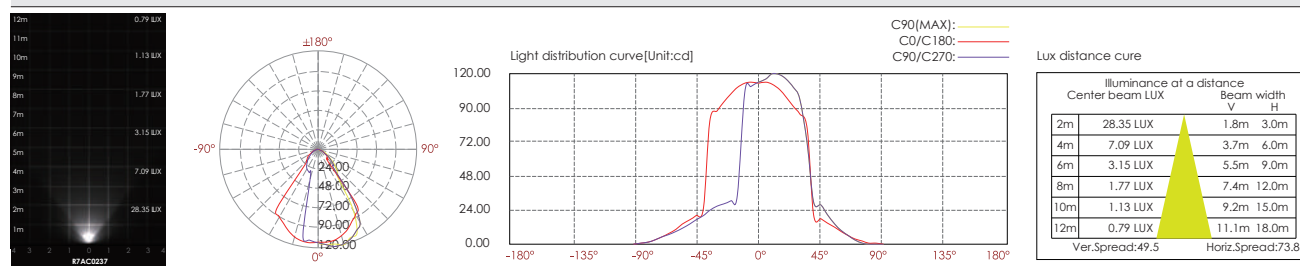
Sanded White
RAL 9003

Sanded Black
RAL9005

TECHNICAL DATA

ITEM	LIGHT SOURCE	INPUT VOLTAGE(V)	OPERATING CURRENT(MA)	CONSUMPTION(W)	IK
D7AC0237	2×3W NICHIA	24V DC 120/240	24V = 268 120V = 138 240V = 73	24V = 6.2 120V = 8.5 240V = 8.6	06

PHOTOMETRIC CURVES



WALL MOUNTING
LANDSCAPE LIGHT

Wall Mounting Landscape Light



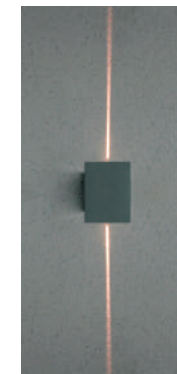
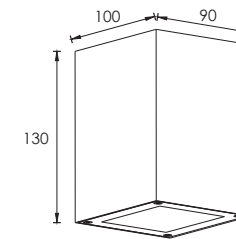
Double Side

LED COLOUR TEMPERATURE

2000K · 3000K · 6000K

OUTER DIMENSIONS & ACCESSORIES

Unit:mm



OPTICS

N/A

MATERIAL SPECIFICATIONS

- HOUSING** | 12# Die-casting dark grey powder coated aluminum
T=60-80μm.Adhesion of ISO class 1/ASTM class 4B
- LIGHT WINDOW** | PC T=6mm
- GASKET** | Tooling shaped seal
- DRIVER** | Main voltage 100V-240V driver inside builded
- OPERATING TEMPERATURE** | -20°C~40°C
- POWER CABLE** | H05RN-F 2×1.0mm² L=0.3m(low voltage)
H05RN-F 3×1.0mm² L=0.3m(high voltage)

HOUSING COLOR OPTION



Dark Grey
RAL 7037

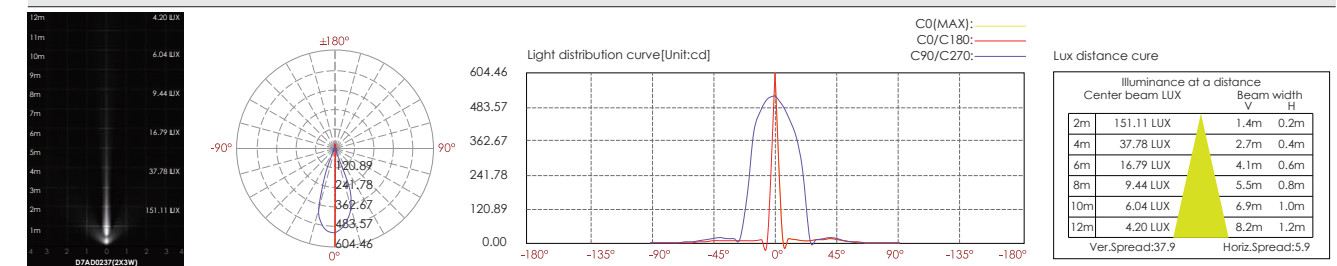
Sanded White
RAL 9003

Sanded Black
RAL9005

TECHNICAL DATA

ITEM	LIGHT SOURCE	INPUT VOLTAGE(V)	OPERATING CURRENT(MA)	CONSUMPTION(W)	IK
D7AD0237	2×3W NICHIA	24V DC 120/240	24V = 268 120V = 73 240V = 42	24V = 6.2 120V = 8.5 240V = 8.6	06

PHOTOMETRIC CURVES



Wall Mounting Landscape Light

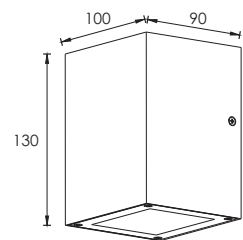


LED COLOUR TEMPERATURE

3000K · 6000K

OUTER DIMENSIONS & ACCESSORIES

Unit:mm



OPTICS



R5



18°

R0118C044XL



25°

R0125C044XL



40°

R0140C044XL

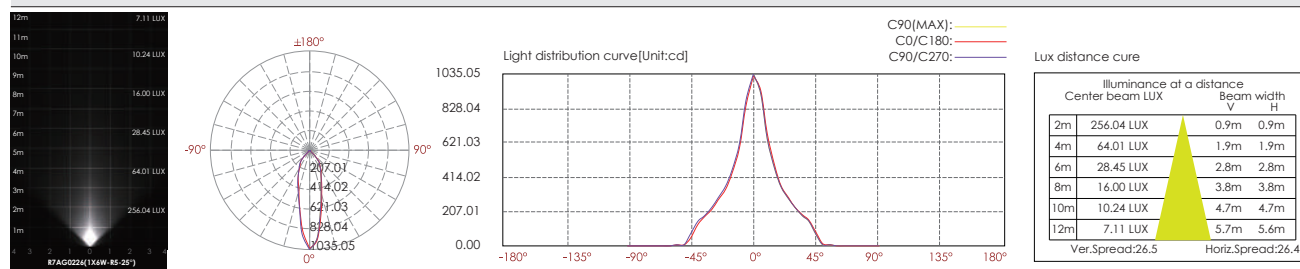
MATERIAL SPECIFICATIONS

- HOUSING** | 12# Die-casting dark grey powder coated aluminum
| T=60-80µm. Adhesion of ISO class 1/ASTM class 4B
- LIGHT WINDOW** | PC T=6mm
- GASKET** | Tooling shaped seal
- DRIVER** | Main voltage 100V-240V driver inside builded
- OPERATING TEMPERATURE** | -20°C~40°C
- MOUNTING BASE** | H05RN-F 2×1.0mm² L=0.3m(low voltage)
| H05RN-F 3×1.0mm² L=0.3m(high voltage)

TECHNICAL DATA

ITEM	LIGHT SOURCE	LENS	LENS DEGREE(°)Ø1/2	INPUT VOLTAGE(V)	OPERATING CURRENT(MA)	CONSUMPTION(W)	LUMINANCE(LM)	IK
R7AG0226	2×6W COB	R5	25°	24V DC 120/240	24V = 540 120V = 130 240V = 74	24V = 13 120V = 15.4 240V = 15.6	Cool White = 2x745 Warm White = 2x651	06

PHOTOMETRIC CURVES



HOUSING COLOR OPTION



Sanded Brown
RAL 8019

Sanded Black
RAL 9005

Sanded White
RAL 9003

Wall Mounting Landscape Lamp



Single Side

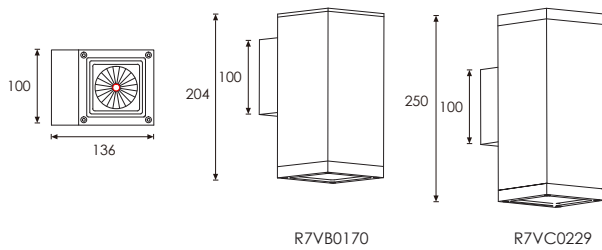
Double side

LED COLOUR TEMPERATURE

3000K · 6000K

OUTER DIMENSIONS & ACCESSORIES

Unit:mm



R7VB0170

R7VC0229

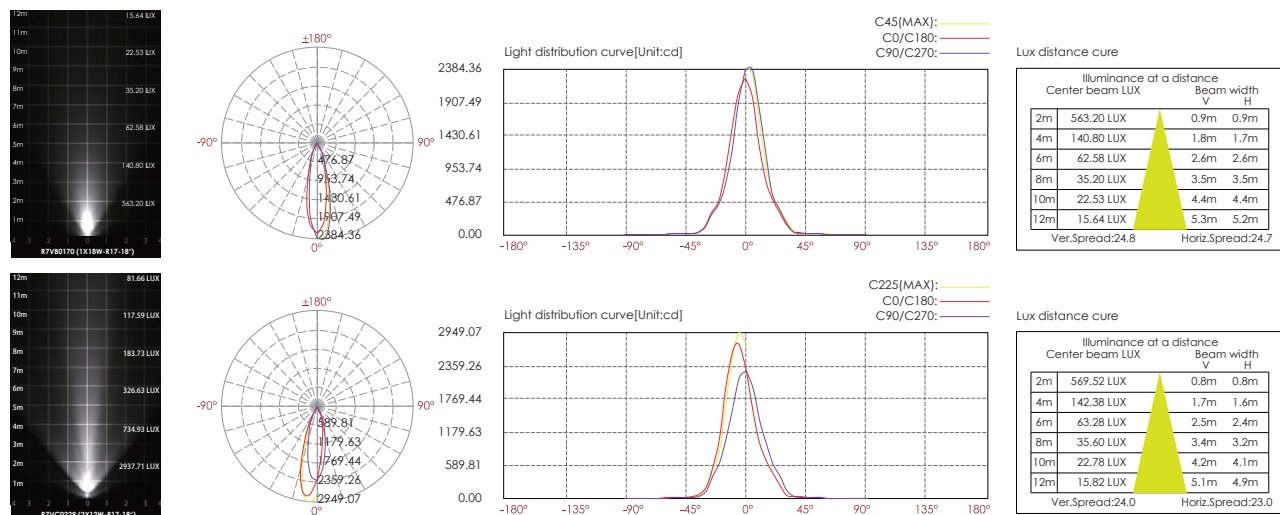
MATERIAL SPECIFICATIONS

- HOUSING** | 12# Die-casting dark grey powder coated aluminum.
T=60-80µm.Adhesion of ISO class 1/ASTM class 4B
- LIGHT WINDOW** | Glass T=3mm
- GASKET** | Tooling shaped seal
- LED DRIVER** | Main voltage 100V-240V driver inside builded
- LED** | NICHIA
- OPERATING TEMPERATURE** | -20°C~40°C
- POWER CABLE** | H05RN-F 2×1.0mm² L=0.3m(low voltage)
H05RN-F 3×1.0mm² L=0.3m(high voltage)

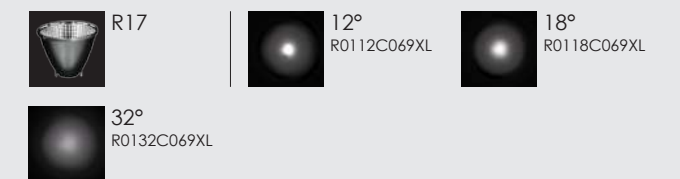
TECHNICAL DATA

ITEM	LIGHT SOURCE	REFLECTOR	LENS DEGREE(°)Ø1/2	INPUT VOLTAGE(V)	OPERATING CURRENT(MA)	CONSUMPTION(W)	LUMINANCE(LM)	IK
R7VB0170	1×18W COB	R17	18°	24V DC 120/240	24V = 833 120V = 178 240V = 96	24V = 20 120V = 20 240V = 21	Cool White = 1766 Warm White = 1705	06
R7VC0229	2×12W COB	R17	18°	24V DC 120/240	24V = 1080 120V = 211 240V = 116	24V = 26 120V = 26.5 240V = 26	Cool White = 1303x2 Warm White = 1251x2	06

PHOTOMETRIC CURVES



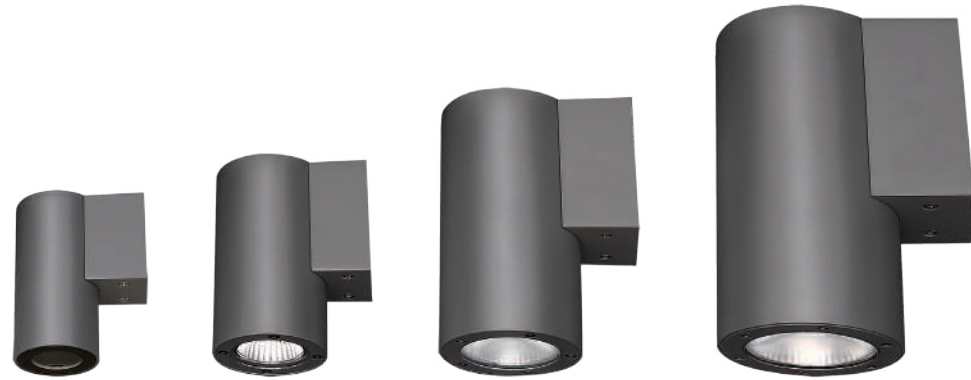
OPTICS



HOUSING COLOR OPTION



Single Side Wall Mounting Landscape Lamp

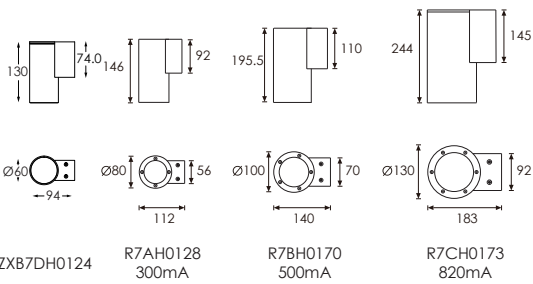


LED COLOUR TEMPERATURE

3000K · 6000K

OUTER DIMENSIONS & ACCESSORIES

Unit:mm



HOUSING COLOR OPTION



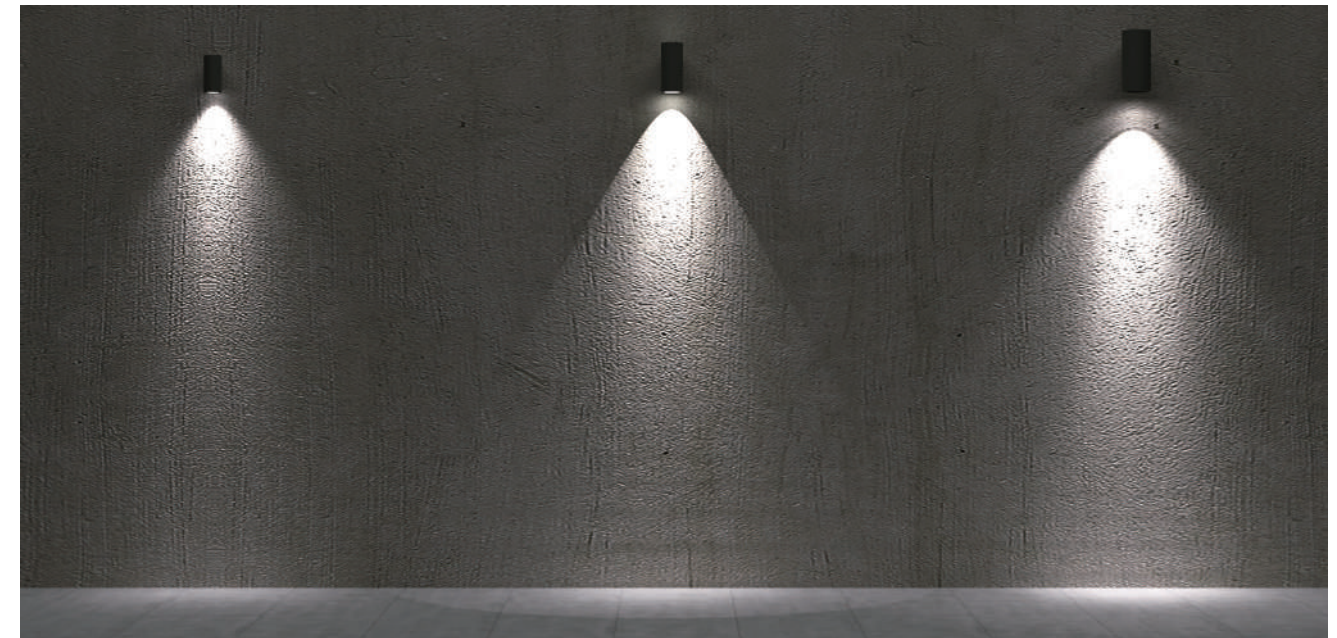
OPTICS

R8	15° R0115C050XL	24° R0124C050XL
38° R0138C050XL	60° R0160C050XL	
R18	12° R0112C075XL	22° R0122C075XL
35° R0135C075XL	55° R0155C075XL	
R19	10° R0110C095XL	22° R0122C095XL
38° R0138C095XL		
B54	15° L0115F035LK	24° L0124S035LK
38° L0138S035LK		

MATERIAL SPECIFICATIONS

HOUSING MATERIAL	Extruded aluminum alloy #6063 Powder coating ,T= 60-80 um./Adhesion of ISO
PAINTING	I class 1/ASTM class 4B
REFLECTOR	I
LED	NICHIA
OPERATING TEMPERATURE	-20°C~ 40°C
POWER CABLE	H05RN-F 2X1.0mm ² L=0.3m(low voltage) H05RN-F 3X1.0mm ² L=0.3m(High voltage)
WEIGHT	R7AH0128=1.0kg R7BH0170=1.9kg R7CH0173=2.5kg

WALL MOUNTING LANDSCAPE LIGHT



R7AH0128

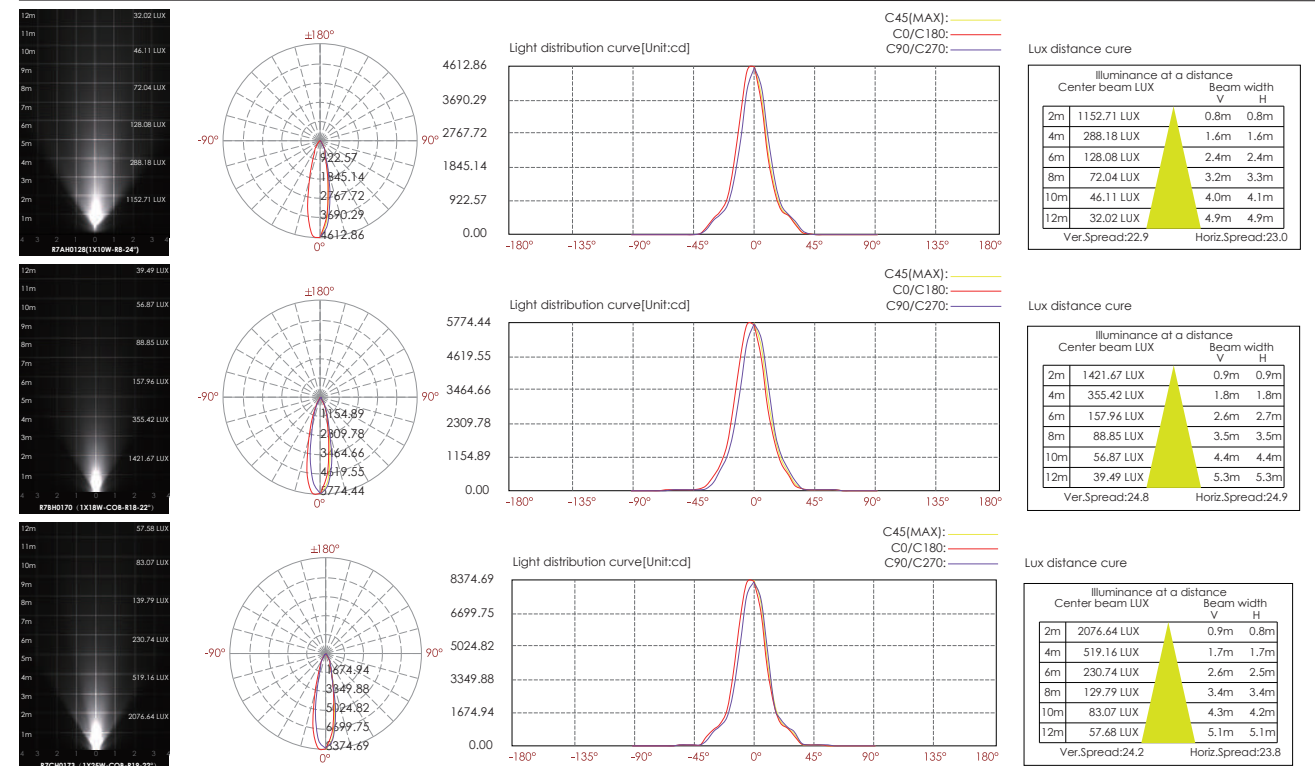
R7BH0170

R7CH0173

TECHNICAL DATA

ITEM	LIGHT SOURCE	REFLECTOR	LENS	LENS DEGREE(°)Ø1/2	INPUT VOLTAGE(V)	OPERATING CURRENT(MA)	CONSUMPTION(W)	LUMINANCE(LM)	IK
R7AH0128	1×10W COB	R8		24°	24V DC 120/240	24V = 480 120V = 112 240V = 63	24V = 11.5 120V = 13.1 240V = 13.5	Cool White = 1335 Warm White = 1170	10
R7BH0170	1×18W COB	R18		22°	24V DC 120/240	24V = 833 120V = 178 240V = 96	24V = 20 120V = 20 240V = 21.4	Cool White = 1684 Warm White = 1432	10
R7CH0173	1×25W COB	R19		22°	24V DC 120/240	24V = 1080 120V = 270 240V = 146	24V = 26 120V = 30 240V = 31	Cool White = 2615 Warm White = 2412	10
ZSB7DH0124	1×4.5W COB		B54	24°	24V DC 240	24V = 233 240V = 43	120V = 5.6 240V = 6	Warm White = 254	05

PHOTOMETRIC CURVES



Single Side Wall Mounting Landscape Lamp

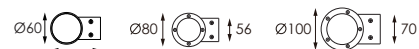
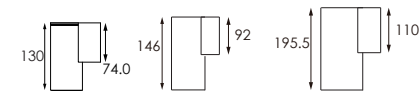


LED COLOUR TEMPERATURE

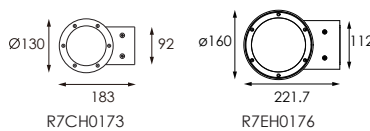
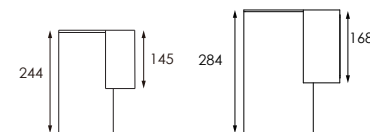
3000K · 6000K

OUTER DIMENSIONS & ACCESSORIES

Unit:mm



ZSB7DH0124 R7AH0128 R7BH0170



R7CH0173

R7EH0176

MATERIAL SPECIFICATIONS

HOUSING MATERIAL	Extruded aluminum alloy #6063 Powder coating ,T= 60-80 um./Adhesion of ISO
PAINTING	I class 1/ASTM class 4B
REFLECTOR	I Optical reflector. efficiency≥85%
LED	I NICHIA
OPERATING TEMPERATURE	I -20°C~ 40°C
POWER CABLE	I H05RN-F 2X1.0mm ² L=0.3m(low voltage) I H05RN-F 3X1.0mm ² L=0.3m(High voltage)
WEIGHT	I R7AH0128=1.0kg R7BH0170=1.9kg R7CH0173=2.5kg

HOUSING COLOR OPTION



RAL9005

RAL9003

RAL7037

WALL MOUNTING
LANDSCAPE LIGHT



R7AH0128

R7BH0170

R7CH0173

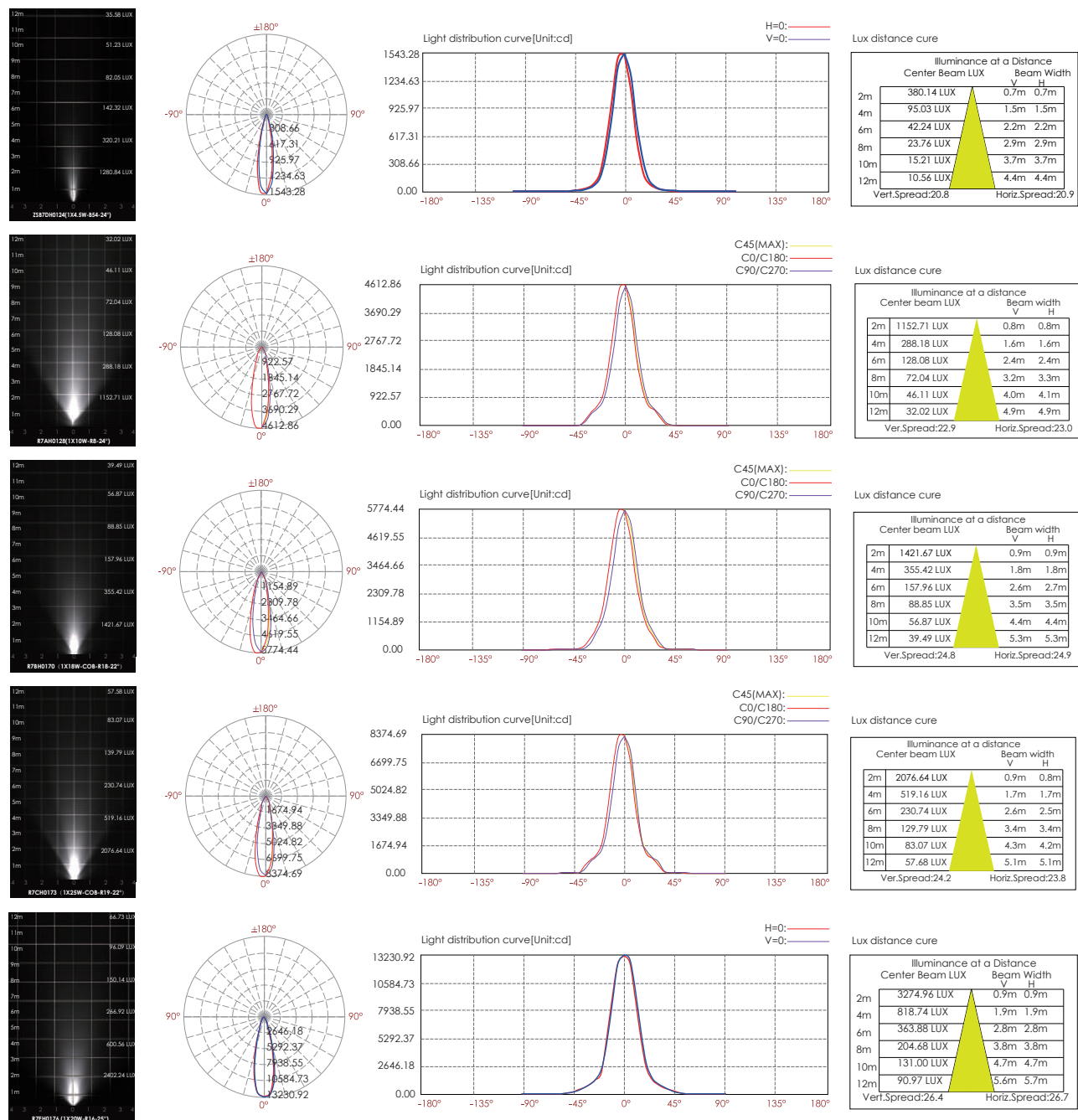
OPTICS

R8	15° R0115C050XL	24° R0124C050XL	38° R0138C050XL	60° R0160C050XL
R18	12° R0112C075XL	22° R0122C075XL	35° R0135C075XL	55° R0155C075XL
R19	10° R0110C095XL	22° R0122C095XL	38° R0138C095XL	
B54	15° L0115F035LK	24° L0124S035LK	38° L0138S035LK	
R16	12° R0112C110XL	25° R0125C110XL	38° R0138C110XL	

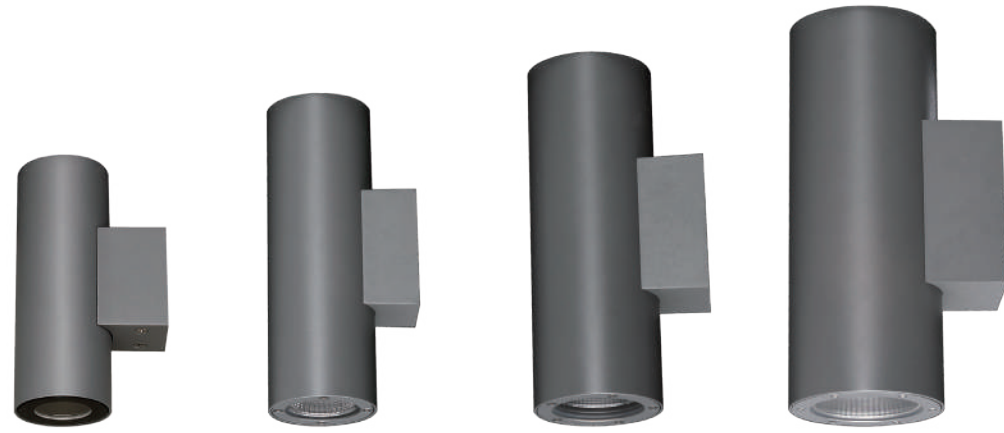
TECHNICAL DATA

ITEM	LIGHT SOURCE	REFLECTOR	LENS	LENS DEGREE(°)Ø1/2	INPUT VOLTAGE(V)	OPERATING CURRENT(MA)	CONSUMPTION(W)	LUMINANCE(LM)	IK
ZSB7DH0124	1×4.5W COB		B54	24°	24V DC 240	24V = 233 240V = 43	120V = 5.6 240V = 6	Warm White = 254	05
R7AH0128	1×10W COB	R8		24°	24V DC 120/240	24V = 480 120V = 112 240V = 63	24V = 11.5 120V = 13.1 240V = 13.5	Cool White = 1335 Warm White = 1170	10
R7BH0170	1×18W COB	R18		22°	24V DC 120/240	24V = 833 120V = 178 240V = 96	24V = 20 120V = 20 240V = 21.4	Cool White = 1684 Warm White = 1432	10
R7CH0173	1×25W COB	R19		22°	24V DC 120/240	24V = 1080 120V = 270 240V = 146	24V = 26 120V = 30 240V = 31	Cool White = 2615 Warm White = 2412	10
R7EH0176	1×40W COB	R16		25°	120/240	120V = 372 240V = 187	120V = 44.8 240V = 44.5	Cool White = 4112 Warm White = 3808	06

PHOTOMETRIC CURVES



Double Side Wall Mounting Landscape Lamp

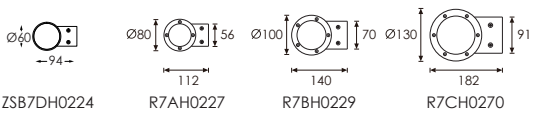
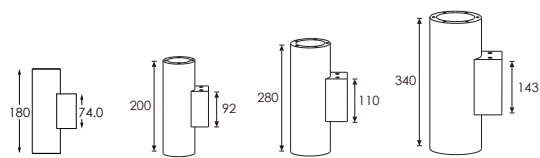


LED COLOUR TEMPERATURE

3000K · 6000K

OUTER DIMENSIONS & ACCESSORIES




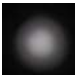









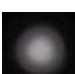

Unit:mm



HOUSING COLOR OPTION



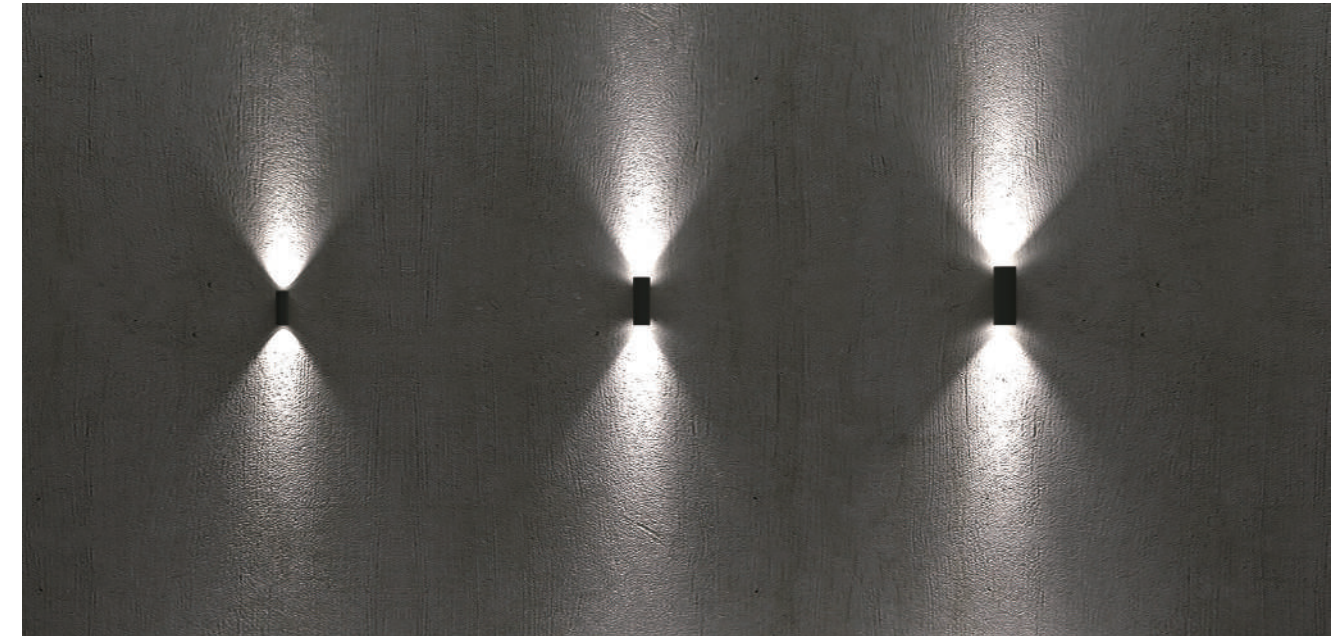
OPTICS

 R8	 15° R0115C050XL	 24° R0124C050XL
 38° R0138C050XL	 60° R0160C050XL	
 R18	 12° R0112C075XL	 22° R0122C075XL
 35° R0135C075XL	 55° R0155C075XL	
 R19	 10° R0110C095XL	 22° R0122C095XL
 38° R0138C095XL		
 B54 L0115F035LK L0124S035LK L0138S035LK		

MATERIAL SPECIFICATIONS

HOUSING MATERIAL	Extruded aluminum alloy #6063; Powder coating, T= 60-80 um./Adhesion of ISO
PAINTING	I class 1/ASTM class 4B
REFLECTOR	I
LIGHT SOURCE	I NICHIA
OPERATING TEMPERATURE	I -20°C~ 40°C
POWER CABLE	I H05RN-F 2X1.0mm2 L=0.3m(low voltage) I H05RN-F 3X1.0mm2 L=0.3m(High voltage)
WEIGHT	I R7AH0227=1.4kg R7BH0229=2.7kg R7CH0270=4.6kg

WALL MOUNTING LANDSCAPE LIGHT



R7AH0227

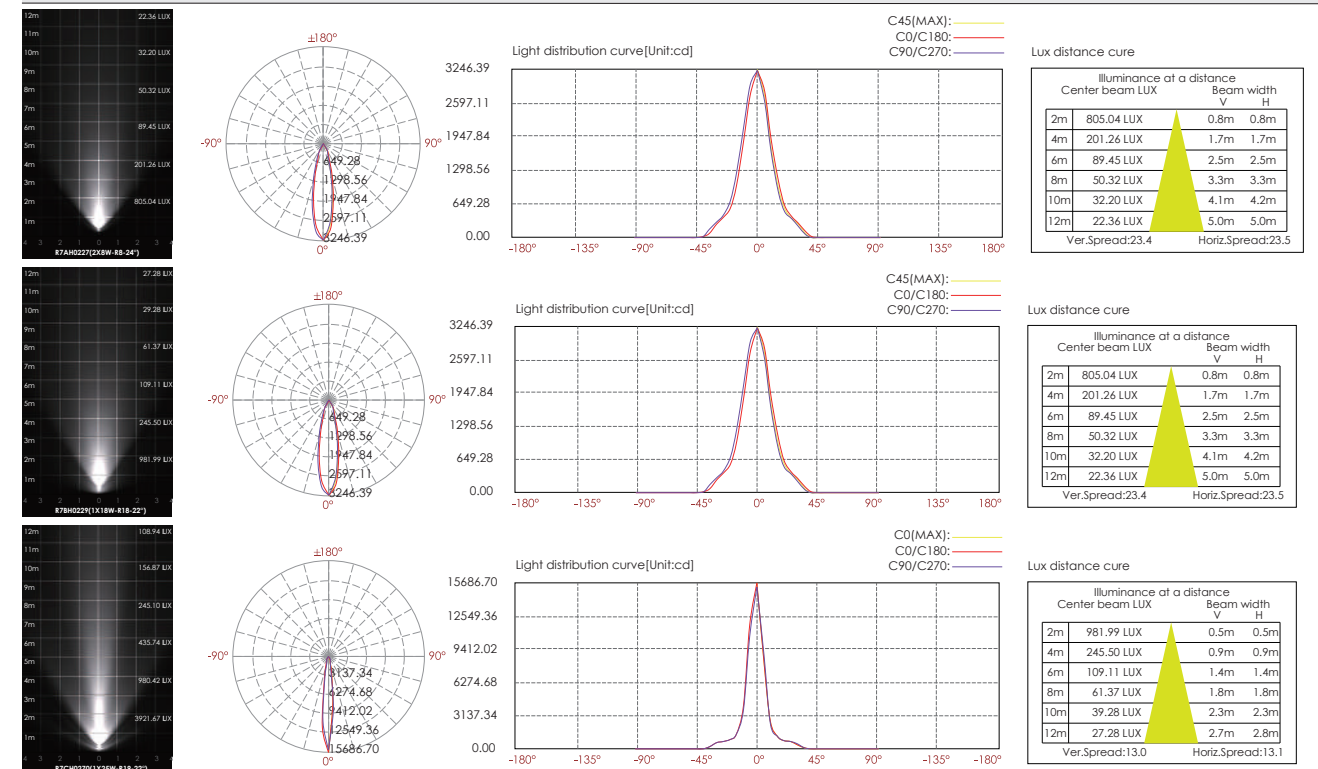
R7BH0229

R7CH0270

TECHNICAL DATA

ITEM	LIGHT SOURCE	REFLECTOR	LENS	LENS DEGREE(°)Ø1/2	INPUT VOLTAGE(V)	OPERATING CURRENT(MA)	CONSUMPTION(W)	LUMINANCE(LM)	IK
R7AH0227	2×8W COB	R8		24°	24V DC 120V/240	24V = 832 120V = 163 240V = 91	24V = 20 120V = 20 240V = 20.8	Cool White = 1053x2 Warm White = 986x2	10
R7BH0229	2×12W COB	R18		22°	24V DC 120V/240	24V = 1080 120V = 210 240V = 116	24V = 26 120V = 25.5 240V = 25	Cool White = 1289x2 Warm White = 1079x2	10
R7CH0270	2×18W COB	R19		22°	24V DC 120V/240	24V = 1660 120V = 340 240V = 182	24V = 40 120V = 40.5 240V = 42	Cool White = 1795x2 Warm White = 1617x2	10
ZSB7DH0224	2×4.5W COB		B54	24°	24V DC 240	24V = 479 240V = 81	24V = 11.5 240V = 12	Warm White = 254x2	10

PHOTOMETRIC CURVES



Double side Wall Mounting Landscape Lamp

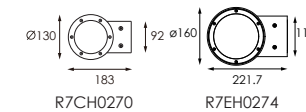
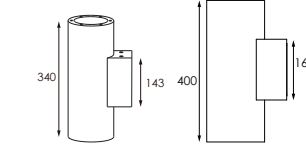
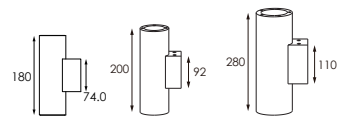


LED COLOUR TEMPERATURE

3000K · 6000K

OUTER DIMENSIONS & ACCESSORIES

Unit:mm



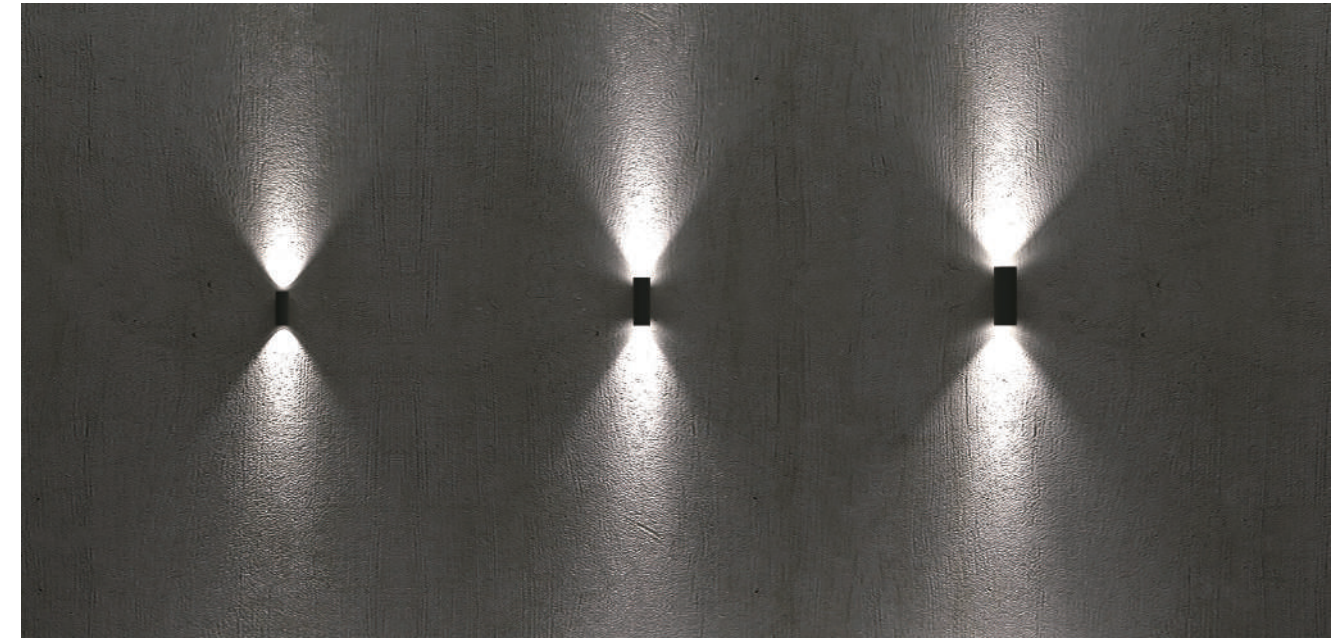
MATERIAL SPECIFICATIONS

HOUSING MATERIAL	Extruded aluminum alloy #6063; Powder coating ,T= 60-80 um./Adhesion of ISO
PAINTING	I class 1/ASTM class 4B
REFLECTOR	I
LIGHT SOURCE	I NICHIA
OPERATING TEMPERATURE	I -20°C~ 40°C
POWER CABLE	I H05RN-F 2X1.0mm2 L=0.3m(low voltage) I H05RN-F 3X1.0mm2 L=0.3m(High voltage)
WEIGHT	I R7AH0227=1.4kg R7BH0229=2.7kg R7CH0270=4.6kg

HOUSING COLOR OPTION



WALL MOUNTING
LANDSCAPE LIGHT



R7AH0227

R7BH0229

R7CH0270

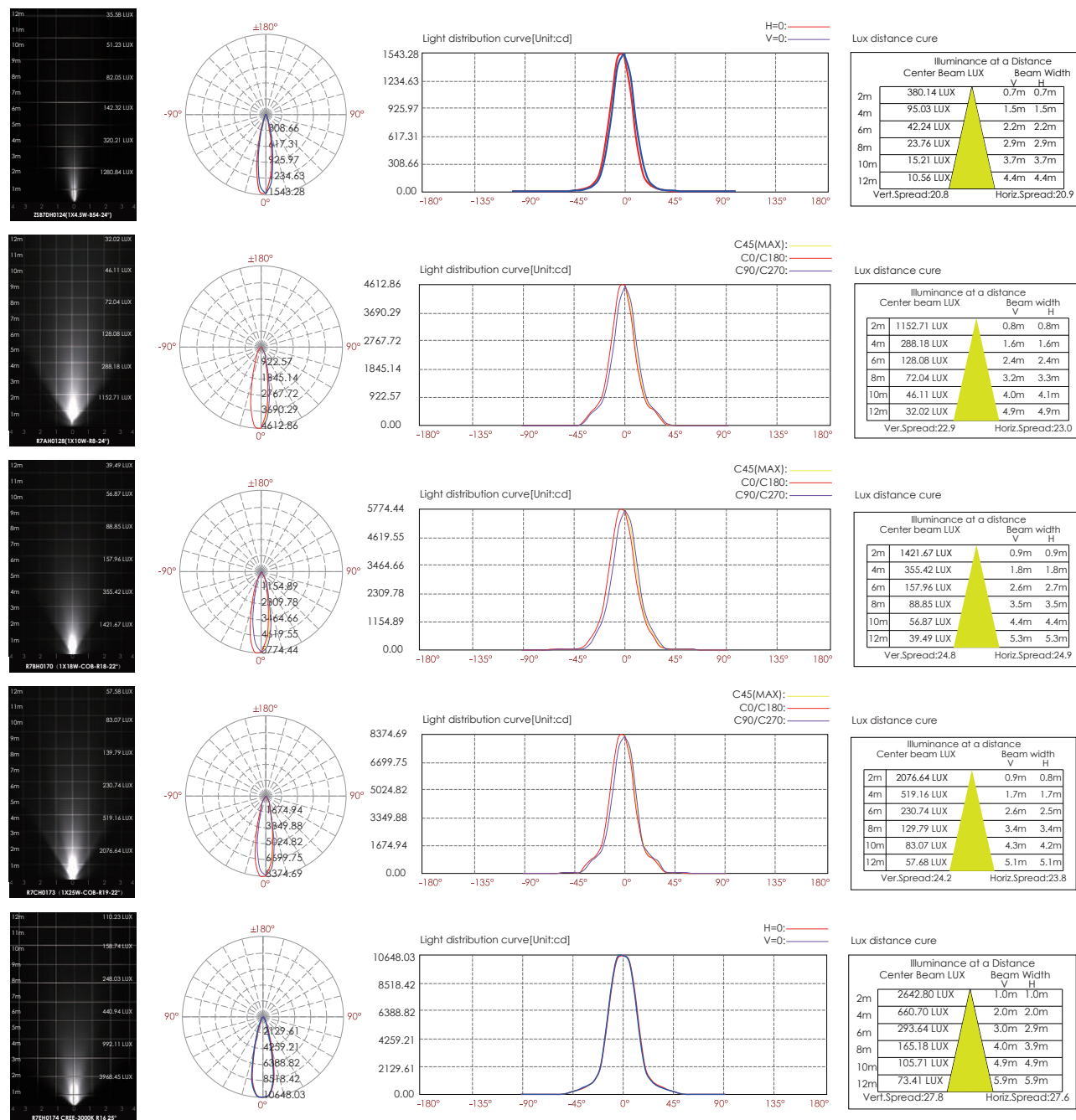
OPTICS

R8	15° R0115C050XL	24° R0124C050XL	38° R0138C050XL	60° R0160C050XL
R18	12° R0112C075XL	22° R0122C075XL	35° R0135C075XL	55° R0155C075XL
R19	10° R0110C095XL	22° R0122C095XL	38° R0138C095XL	
B54	15° L0115F035LK	24° L0124S035LK	38° L0138S035LK	
R16	12° R0112C110XL	25° R0125C110XL	38° R0138C110XL	

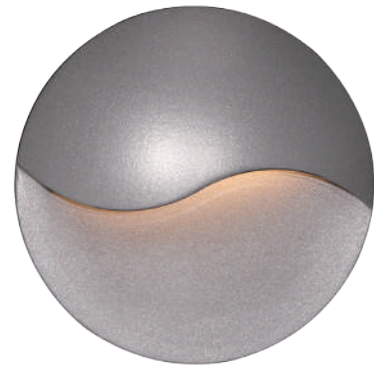
TECHNICAL DATA

ITEM	LIGHT SOURCE	REFLECTOR	LENS	LENS DEGREE(°)Ø1/2	INPUT VOLTAGE(V)	OPERATING CURRENT(MA)	CONSUMPTION(W)	LUMINANCE(LM)	IK
ZSB7DH0224	2×4.5W COB		B54	24°	24V DC 240	24V = 479 240V = 81	24V = 11.5 240V = 12	Warm White = 254x2	10
R7AH0227	2×8W COB	R8		24°	24V DC 120/240	24V = 832 120V = 163 240V = 91	24V = 20 120V = 20 240V = 20.8	Cool White = 1053x2 Warm White = 986x2	10
R7BH0229	2×12W COB	R18		22°	24V DC 120/240	24V = 1080 120V = 210 240V = 116	24V = 26 120V = 25.5 240V = 25	Cool White = 1289x2 Warm White = 1079x2	10
R7CH0270	2×18W COB	R19		22°	24V DC 120/240	24V = 1660 120V = 340 240V = 182	24V = 40 120V = 40.5 240V = 42	Cool White = 1795x2 Warm White = 1617x2	10
R7EH0274	2×30W COB	R16		25°	120/240	120V = 540 240V = 292	120V = 60 240V = 62	Cool White = 3400x2 Warm White = 3177x2	06

PHOTOMETRIC CURVES



Wall Mounting Landscape Light



LED COLOUR TEMPERATURE

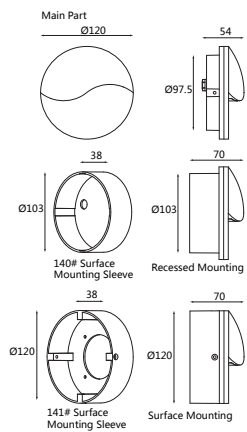
2000K · 3000K · 6000K

OPTICS

N/A

OUTER DIMENSIONS & ACCESSORIES

Unit:mm



MATERIAL SPECIFICATIONS

- HOUSING** | 12# Die-casting dark grey powder coated aluminum
| T=60-80µm. Adhesion of ISO class 1/ASTM class 4B
- LIGHT WINDOW** | PC T=6mm
- GASKET** | Tooling shaped seal
- DRIVER** | Constant Voltage Input, Constant Current Output
- OPERATING TEMPERATURE** | -20°C~40°C
- POWER CABLE** | H05RN-F 3×1.0mm² L=0.3m(high voltage)

ALTERNATIVE INSTALLATION



Recessed mounted by 140# sleeve

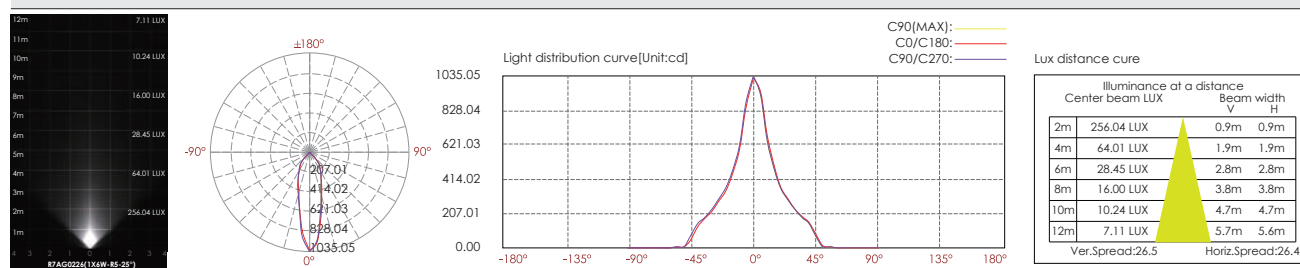


Surface mounted by 141# sleeve

TECHNICAL DATA

ITEM	LIGHT SOURCE	LENS DEGREE(°)Ø1/2	INPUT VOLTAGE(V)	OPERATING CURRENT(MA)	CONSUMPTION(W)	LUMINANCE(LM)
D7AJ0634	6×0.5W NICHIA	97°×49°	240	26	3	36

PHOTOMETRIC CURVES



WALL MOUNTING
LANDSCAPE LIGHT



HOUSING COLOR OPTION

Basic



Dark Grey
KAP 7037

Secondary



Silver Resistant Paint
RAL 9006



Sanded Black
RAL9005



Wall Mounting Landscape Light



LED COLOUR TEMPERATURE

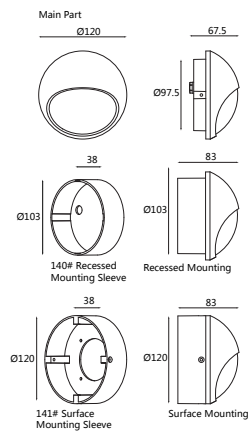
2000K · 3000K · 6000K

OPTICS

N/A

OUTER DIMENSIONS & ACCESSORIES

Unit:mm



MATERIAL SPECIFICATIONS

- HOUSING** | 12# Die-casting dark grey powder coated aluminum
T=60-80μm, Adhesion of ISO class 1/ASTM class 4B
- LIGHT WINDOW** | PC T=6mm
- GASKET** | Tooling shaped seal
- DRIVER** | Constant Voltage Input, Constant Current Output
- OPERATING TEMPERATURE** | -20°C~40°C
- POWER CABLE** | H05RN-F 3×1.0mm² L=0.3m(high voltage)

ALTERNATIVE INSTALLATION



Recessed mounted by 140# sleeve

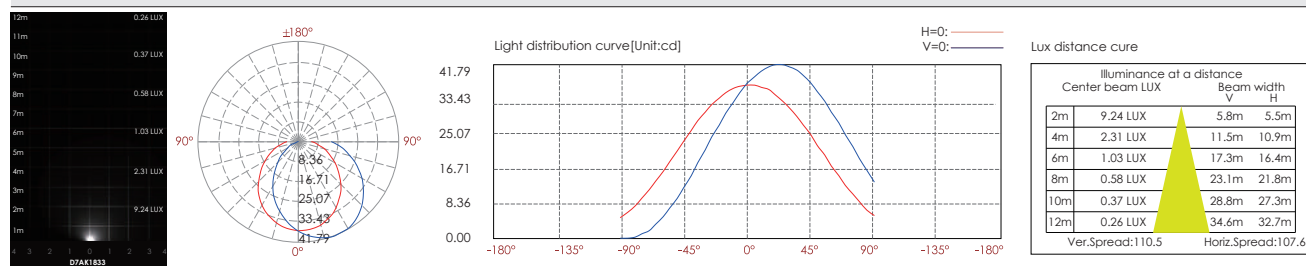


Surface mounted by 141# sleeve

TECHNICAL DATA

ITEM	LIGHT SOURCE	LENS DEGREE(°)Ø1/2	INPUT VOLTAGE(V)	OPERATING CURRENT(MA)	CONSUMPTION(W)	LUMINANCE(LM)
D7AK1833	18×0.15W NICHIA	110°	240	24	3	117

PHOTOMETRIC CURVES



WALL MOUNTING
LANDSCAPE LIGHT



HOUSING COLOR OPTION

Basic



Dark Grey
KAP 7037

Secondary



Silver Resistant Paint
RAL 9006



Sanded Black
RAL9005



Wall Mounting Landscape Light



LED COLOUR TEMPERATURE

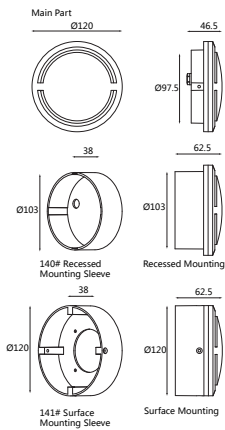
2000K · 3000K · 6000K

OPTICS

N/A

OUTER DIMENSIONS & ACCESSORIES

Unit:mm



MATERIAL SPECIFICATIONS

- HOUSING** | 12# Die-casting dark grey powder coated aluminum
| T=60-80 μ m. Adhesion of ISO class 1/ASTM class 4B
- LIGHT WINDOW** | PC T=6mm
- GASKET** | Tooling shaped seal
- DRIVER** | Constant Voltage Input, Constant Current Output
- OPERATING TEMPERATURE** | -20°C~40°C
- POWER CABLE** | H05RN-F 3 \times 1.0mm² L=0.3m(high voltage)

ALTERNATIVE INSTALLATION



Recessed mounted by 140# sleeve

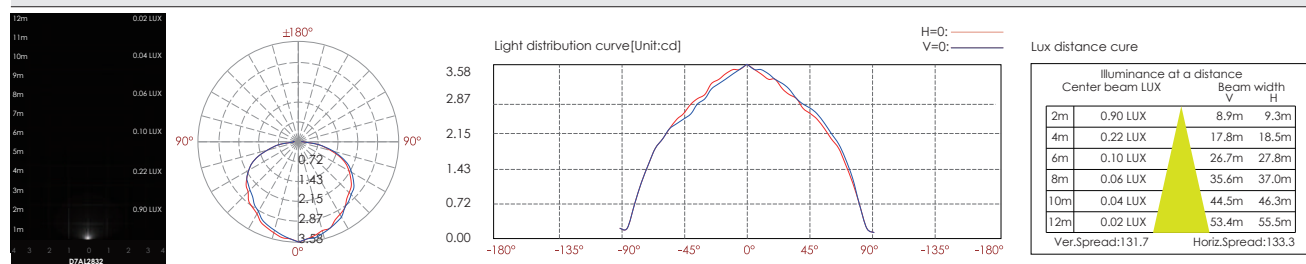


Surface mounted by 141# sleeve

TECHNICAL DATA

ITEM	LIGHT SOURCE	LENS DEGREE(°) ϕ 1/2	INPUT VOLTAGE(V)	OPERATING CURRENT(MA)	CONSUMPTION(W)	LUMINANCE(LM)
D7A12832	28 \times 0.1W NICHIA	130	240	14	3	12

PHOTOMETRIC CURVES



WALL MOUNTING
LANDSCAPE LIGHT



HOUSING COLOR OPTION

Basic



Dark Grey
KAP 7037

Secondary



Silver Resistant Paint
RAL 9006



Sanded Black
RAL9005

Wall Mounting Landscape Light



LED COLOUR TEMPERATURE

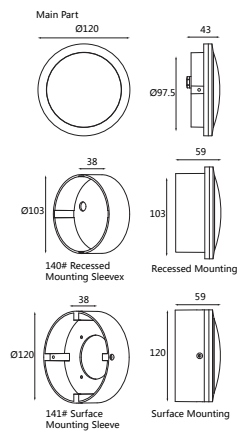
2000K · 3000K · 6000K

OPTICS

N/A

OUTER DIMENSIONS & ACCESSORIES

Unit:mm



MATERIAL SPECIFICATIONS

- HOUSING** | 12# Die-casting dark grey powder coated aluminum | T=60-80µm. Adhesion of ISO class 1/ASTM class 4B
- LIGHT WINDOW** | PC T=6mm
- GASKET** | Tooling shaped seal
- DRIVER** | Constant Voltage Input, Constant Current Output
- OPERATING TEMPERATURE** | -20°C~40°C
- POWER CABLE** | H05RN-F 3×1.0mm² L=0.3m(high voltage)

ALTERNATIVE INSTALLATION



Recessed mounted by 140# sleeve

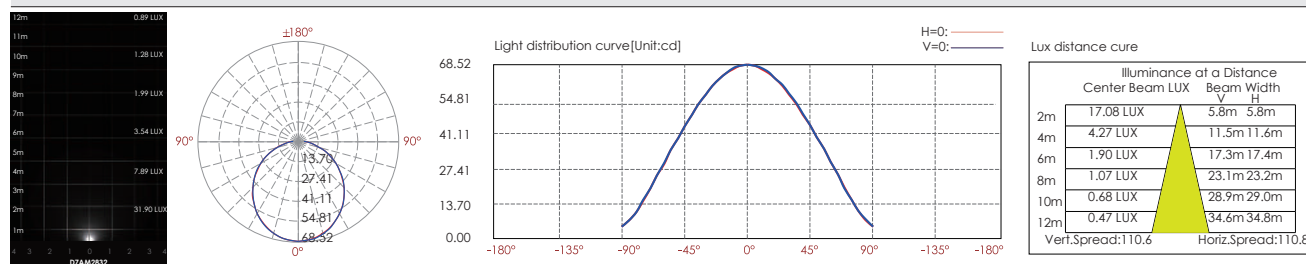


Surface mounted by 141# sleeve

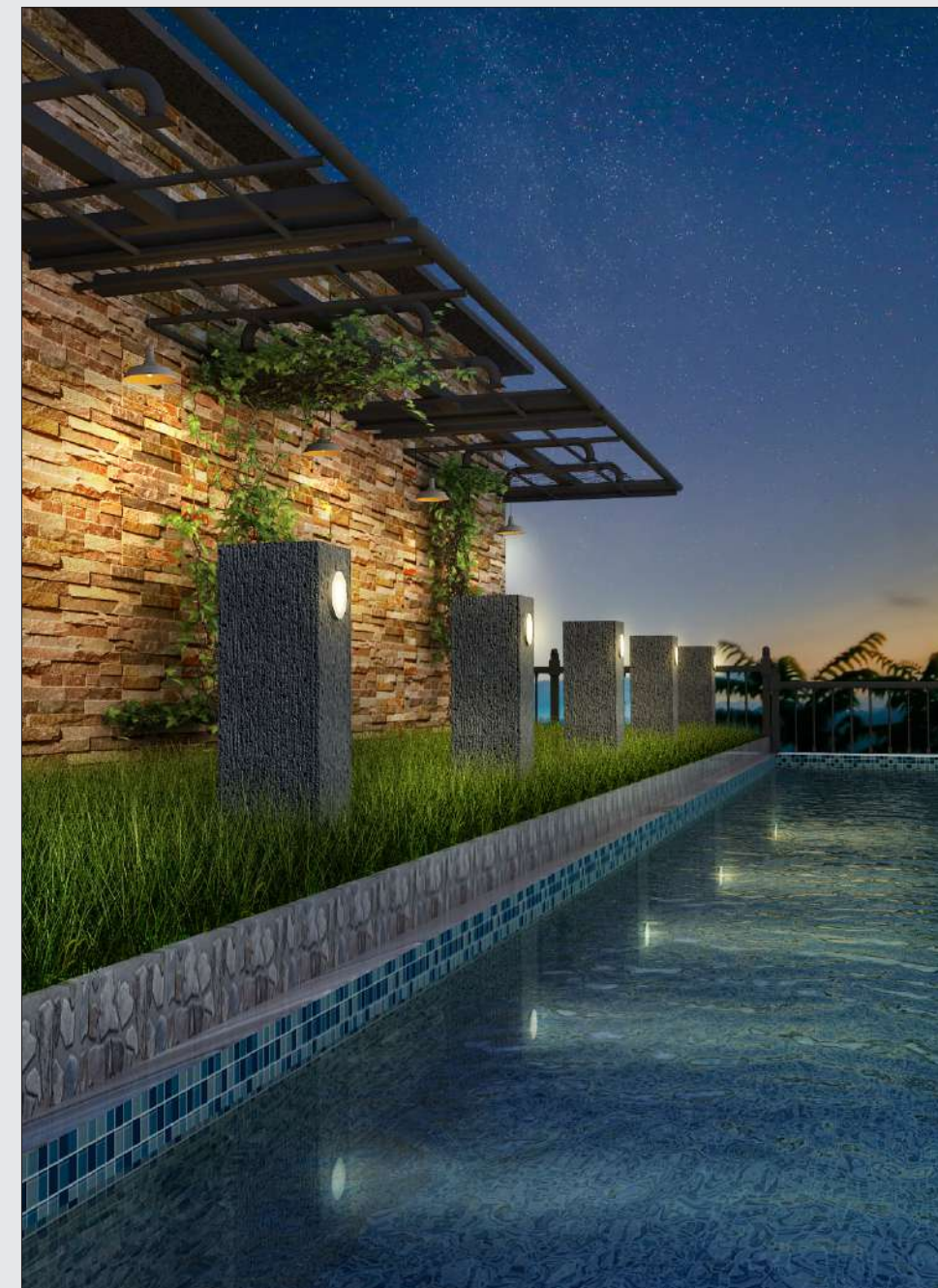
TECHNICAL DATA

ITEM	LIGHT SOURCE	LENS DEGREE(°)Ø1/2	INPUT VOLTAGE(V)	OPERATING CURRENT(MA)	CONSUMPTION(W)	LUMINANCE(LM)
D7AM2832	28×0.1W NICHIA	110	240	14	3	196

PHOTOMETRIC CURVES



WALL MOUNTING
LANDSCAPE LIGHT



HOUSING COLOR OPTION

Basic



Dark Grey
KAP 7037

Secondary



Silver Resistant Paint
RAL 9006



Sanded Black
RAL9005

